



UN Sustainable  
Development Goals

---

# Introduction

The United Nations Sustainable Development Goals (SDGs) are a call to global action to overcome the world's biggest challenges — from hunger and poverty to equality and environmental action.

We are working with our research communities, external partners, students and colleagues on various projects that help towards achieving these goals - and aligning our sustainability strategy to enable this.

“

Lancaster University is committed to playing a key role in tackling the climate crisis by addressing the Sustainable Development Goals across our teaching, research and engagement and through the way we manage and operate our University as an organisation.

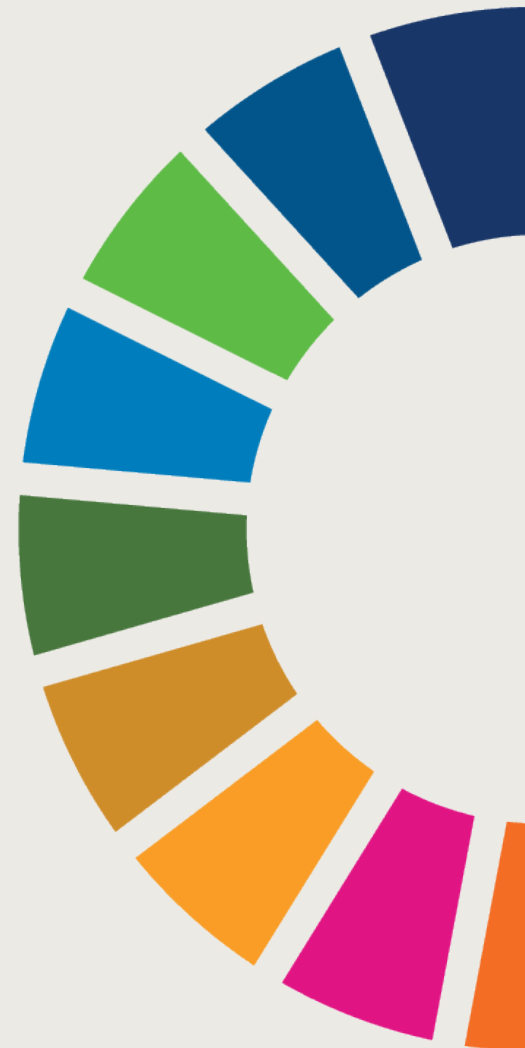
**Professor Simon Guy**

Pro-Vice-Chancellor Global (Digital, International, Sustainability)

”

- SDG1** – No Poverty
- SDG2** – Zero Hunger
- SDG3** – Good Health and Well-being
- SDG4** – Quality Education
- SDG5** – Gender Equality
- SDG6** – Clean Water and Sanitation
- SDG7** – Affordable and Clean Energy
- SDG8** – Decent Work and Economic Growth
- SDG9** – Industry, Innovation and Infrastructure
- SDG10** – Reduced Inequalities
- SDG11** – Sustainable Cities and Communities
- SDG12** – Responsible Consumption and Production
- SDG13** – Climate Action
- SDG14** – Life below water
- SDG15** – Life on land
- SDG16** – Peace, Justice and Strong Institutions
- SDG17** – Partnerships for the Goals

3  
4  
5  
6  
7  
8  
9  
10  
11  
12  
13  
14  
15  
16  
17  
18  
19



# SDG1 – No Poverty

End poverty, in all forms, everywhere



## Research

### Inequality research

The Centre for Alternatives to Social and Economic Inequalities (CASEI) is based in the Sociology Department at Lancaster University and thinks globally and acts locally in researching the causes of, and offering solutions to, a range of inequalities. One area is researching the Morecambe Bay Poverty Truth Commission, that brings together a group of citizens with lived experience of poverty who meet together and share their stories with each other, with the aim to using this experience to inform local policy and work with local government.

### Alternative Entrepreneurship

Researchers from Lancaster University Management School have been researching entrepreneurs in Favelas in Rio de Janeiro who have drawn in tourists, and demonstrate how people can use entrepreneurship to help them overcome poverty and social exclusion. Their work is focused on finding out how people living in extreme conditions, manage to overcome barriers and find motivation to shape the world around them.

## Teaching

### Austerity and poverty

We're committed to teaching about poverty and ways to improve life for others. For example, our Human Geography degree, examines poverty, environmental challenges and inequalities and how this changes human geography and displacement in the developing world.



## University Operations

### Lancaster Sanctuary Scholarships

Our Sanctuary Scholarship offers students who are refugees or have humanitarian protection the support and resources they need to integrate into our community here at Lancaster.

### Student Financial Support

Students can access different grants or funds to help support personal development or assist with financial hardship from either their college at Lancaster University or Student Services.

Did you know?

- **£5.7m** in scholarships and bursarys awarded in 2021
- **5160** students helped with fees or living costs in 2021
- Students from **51 countries** awarded scholarships in 2021

# SDG2 – Zero Hunger

End hunger, achieve food security and promote sustainable agriculture



## Research

### Agri-Food

Agri-Food is a research theme within The Lancaster Environment Centre and from soil to sale, our researchers are helping to develop globally relevant and accessible food systems. One project is called Tomatoes for Tomorrow that looks at the increasing challenges of growing tomatoes in Mexico due to climate change, and they work to identify, characterise, protect and celebrate Mexico's unique tomato agrodiversity.

### Urban Food Growing

The Rurban Revolution project, featuring researchers from Lancaster Environment Centre, has been looking into urban food growing and whether urban cities and towns can be better used for agriculture. In the study, they found urban gardeners and hydroponics can meet and sometimes exceed the yields of rural farms. The new paper compiles studies on urban agriculture from 53 countries to find out which crops grow well in cities, what growing methods are most effective, and which spaces can be utilised for growing.



## University Operations

### Sustainable food on campus

Lancaster University is committed to improving the availability and range of plant-based food options available across campus. Our recently updated Pendle Brew bar is now 100% vegetarian and vegan, and HIVE café has many vegan and low-sugar options. We also commit to using sustainable, local suppliers wherever possible – with specific focus on Lancashire suppliers.

## Student Engagement

### Edible Campus

The Green Lancaster ECOHub is a secluded 4000m<sup>2</sup> nature-based garden on South West Campus, with a focus on sustainable agricultural production. Edible Campus, the team behind the running of the crop planning and organic garden on site, who have been growing a wide range of fresh fruit and vegetables for many years. Boasting some 40 raised planting beds, a fruit tree orchard, soft fruits, rescue chicken enclosure and bee hives. Produce from the ECOHub is sold at the Students' Union supermarket "Central" and the volunteers have also coordinated a "veggie box" scheme for students, staff and the local community.

Did you know?

- In 2019 the team were awarded as the **first University in the country to achieve full Allergen Accreditation** across all food on campus



# SDG3 – Good Health and Well-being

Ensure healthy lives and promote good well-being for all

**3** GOOD HEALTH AND WELL-BEING



## Research

### Healthier Fleetwood

Researchers at Imagination Lancaster (a research centre at the University) research and fund a project that looks at the success and challenges of Healthier Fleetwood – a local, non-profit that aims to improve the health and wellbeing of Fleetwood; in order to suggest how to replicate this in other towns across the UK. While the focus is on Fleetwood, its similarities to other coastal and deprived neighbourhoods and towns, make this project a scalable and replicable study for other parts of the UK.

### Health in contact centres

Researchers from Lancaster are involved in a project exploring how contact centres can improve the health and working conditions of their advisors. Contact centre advisors typically live on low incomes and are from deprived areas. They experience high levels of stress due to conditions at work, such as continuous performance monitoring and sitting for long periods. The three-year project will create resources and guidance that contact centres can use to implement policies and interventions to improve the health and work conditions.

## Campus Operations

### Healthy Living January

Every January, we run our Healthy Living campaign for both staff and students to encourage ways to wellbeing. The sports centre puts on discounted or free taster classes, there are Walk & Talk sessions where you can enjoy some led walks around campus, tree-planting sessions and new, healthy food options to try at all our cafés on campus.

### Green spaces and woodland trail

Lancaster University is set in 560 acres of parkland with more than 25,000 trees and a 2.6-mile woodland trail around the edge of campus for students, staff and the local community to enjoy time away from studies and work. Additionally, Green Lancaster run weekly wellbeing ECOWild walks on campus which provide staff, students and the local community with the chance to identify, observe and record plant and animal sightings, whilst taking the time to intentionally connect with the rest of the natural world.



Did you know?

- **560 acre** parkland campus
- **2.6 mile** woodland trail
- **£25 million** investment in sports facilities

# SDG4 – Quality Education

Inclusive and equitable quality education and promote lifelong learning opportunities



## Research

### Community Enterprise Coaching

Research led by Lancaster University has culminated in the creation of new college courses, designed to give budding entrepreneurs from socially excluded groups a boost of confidence. The first participants have now been welcomed onto the 'Community Enterprise Coaching' course at Lancaster and Morecambe College, a learning programme co-created by academics and entrepreneurs working on Elie 2.0, a Europe-wide research project to improve the chances of marginalised groups setting up their own businesses.

## Teaching

### Transnational Education quality

As a global university with teaching partnerships around the world, Lancaster is committed to providing high-quality transnational education. This is demonstrated through our participation in the Quality Assurance Agency for Higher Education (QAA) QE-TNE Scheme. The Scheme is a method for the quality evaluation and enhancement of UK transnational education. It is enhancement-led, informed by robust metrics, and has the student experience at its heart.

## Public Engagement

### Morecambe Bay Curriculum

Developed by the community for the community, the Morecambe Bay Curriculum is a unique 'place-based' green curriculum for children and young people in our region to learn how to look after themselves, their area and their planet. Recently, school pupils from Morecambe attended the University over a three-week period, learning about sustainability and how to recycle, reuse and reduce your waste from academics at the Lancaster Environment Centre and creating a "Pupil Parliament Climate Charter" which outlined how they planned to engage their schools in the battle against climate change.

## University Operations

### The Lancaster Award

The Lancaster Award rewards students for taking part in those extra-curricular activities outside of academic studies that supplement the excellent education they receive at Lancaster University. Developed in partnership with employers, the certificate rewards students for making the most of their time at Lancaster, and enhances future job prospects by encouraging people to acquire new skills valued by employers.

### Library and Information Literacy Programme

The Library and Information Literacy Programme is designed to help students, researchers and staff to learn information literacy skills, develop a critical approach to dealing with information and to make the most of the physical and digital library. Information Literacy incorporates a range of knowledge, skills and abilities across a wide spectrum of activity including how to identify, search for, collect, organise, evaluate, analyse, present and communicate information.



# SDG5 – Gender Equality

Achieve gender equality and empower women and girls



## Research

### The Centre for Gender Studies

The Centre for Gender Studies at Lancaster University is unique. It is one of the largest centres in the UK for feminist research, gender studies, and it is the only centre of its kind in the North West of England. Over 30 years old, CGS has a long and proud history, counting many world-leading feminist academics amongst its former directors and/or alumni.

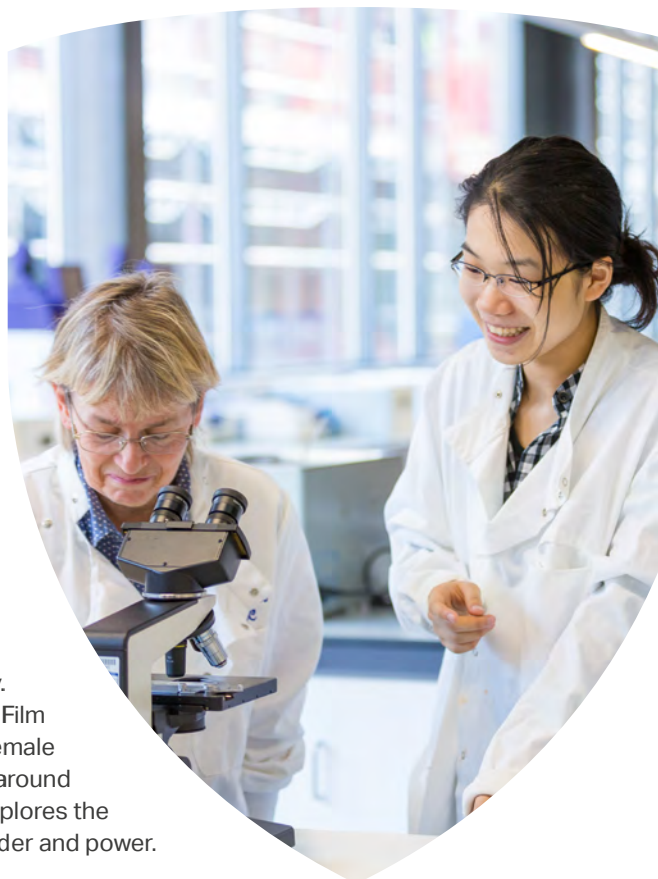
### The Academy for Gender, Work and Leadership

The Academy for Gender, Work and Leadership is a dynamic research hub within Lancaster University Management School, focused on exploring relationships between gender, work and leadership and their impact on individuals, organisations and society. One of their recent projects looks at gender equality within business and management schools and how this is culturally constructed.

## Teaching

### Gender equality

Gender equality is embedded across the curriculum at Lancaster University. For example, our Film and Creative Writing degree has a module on Women Film Makers, that explores the work of some of the most historically important female film-makers from the 1890s through to the present, considering films from around the globe. Our Sociology degree has a module on Gender Studies, which explores the gendering of identities, relations and institutions and the links between gender and power.



## University Operations

### Athena Swan

The Athena Swan Charter is a higher education programme for the advancement of gender equality. We have been members of the Athena Swan Charter since 2008, achieving awards at university, faculty and departmental level. Lancaster University has held an institutional level Bronze award since 2008, with renewals in 2012, 2014 and 2019. The Physics department and Faculty of Health and Medicine, currently hold Silver awards.

### Lancaster University Women's Network

The Lancaster University Women's Network was established in 2018 to support Women at Lancaster University by providing a forum for empowerment, discussion and individual development as well as a platform for debate, awareness raising and to facilitate action for change. They offer targeted development activities and events for women including training, mentoring and support.

# SDG6 – Clean Water and Sanitation

Sustainable management of water and sanitation for all



## Research

### RECIRCULATE

Researchers from Lancaster Environment Centre are working with researchers across Africa to deliver innovative solutions to pressing problems with water use and safety. RECIRCULATE will “join up” the different ways in which water sustains communities, from sewage disposal to energy generation and water used in food production.

### Flood risk

Researchers from the Sustainable Catchments group at Lancaster Environment Centre are involved in a project to look at flood risk and flood management across Cumbria, to see how they can naturally reduce the risk of flooding, improve water quality and reduce the risk of water shortages.

## Teaching

### Water technologies

Our degree options run through The Lancaster Environment Centre, focus on teaching about global challenges such as climate change, sustainable development, resource provision, and natural hazards. For example, our Environmental Science degree has a module on Water Resources Management, that focuses on the technologies available to treat wastewater, the approaches used to assess chemical and biological water quality, and the links between agricultural and urban development and water quality.

## Public Engagement

### Sewage Waste

Our researchers work with United Utilities Water (UU), part of United Utilities Group PLC, through a Knowledge Transfer Partnership to investigate BIOSORBENT, a novel microbial method for the removal of waste from sewage, which uses less energy than existing activated sludge treatments.

## Campus Operations

### Water for all

We’re committed to making free drinking water accessible for students and staff and we have a number of water fountains across campus plus free tap water available in all our food outlets. By adding more fountains, we are hoping to reduce single-use plastic on campus.





# SDG7 – Affordable and Clean Energy

Ensure access to affordable, reliable and sustainable energy

7 AFFORDABLE AND CLEAN ENERGY



## Research

### Next generation batteries

Researchers and academics from our Departments of Chemistry and Physics and the Energy Lancaster research group are part of teams of researchers across the UK that will develop novel sodium-ion batteries as well as discover the next generation of cathode materials for lithium-ion batteries. The project will facilitate improvements in batteries used for transport and energy grid storage to improve performance and bring down costs of products.

## Teaching

### Green energy

Our degree options run through The Lancaster Environment Centre, focus on teaching about global challenges such as climate change, sustainable development, resource provision, and natural hazards. For example, our Environmental Science degree has a module on Energy and the Environment, that focuses on each of the key energy technologies, learning how to detail its importance, its forms and uses, how much is produced, and its cost and environmental impact, whilst looking at future solutions to sustainable energy demands.

## Public Engagement

### Low carbon hydrogen

Lancaster University is part of the innovative and exciting Hydrogen to Heysham (H2H) project which is looking at generating low carbon, low cost, local hydrogen from Heysham Power Stations. Led by EDF Energy, our researchers are looking to design a hydrogen gas generation plant at Heysham Power Stations. The gas can then be used as a zero-carbon transport or heating fuel.

## Campus Operations

### Wind turbine

The wind turbine on our campus has generated between 4,000,000 and 5,000,000 kWh of electricity. Catering for around 14% of the University's electricity consumption each year, producing enough electricity to power over 1200 homes for a year.

### Solar Farm

Planning permission has been granted for a Solar Farm on University land, comprising of 36,000 individual panels that will generate enough electricity to power the equivalent of more than 3000 homes and will reduce annual carbon emissions by more than 2600 tonnes of CO<sub>2</sub>.



Did you know?

- The solar farm will reduce energy emissions by up to **40%**
- The wind turbine saves on average **1200 tonnes** of CO<sub>2</sub> each year
- Since 2005, we've reduced energy related emissions by **50%**

# SDG8 – Decent Work and Economic Growth

Promote sustainable and inclusive economic growth and productive and decent employment for all

8 DECENT WORK AND ECONOMIC GROWTH



## Research

### The Pentland Centre for Sustainability in Business

The Pentland Centre for Sustainability in Business (part of Lancaster University Management School) is a research centre, delivering stimulating research on sustainability in business. Their work aims to demonstrate how a strategic focus on sustainability risks, challenges and opportunities can drive both financial and non-financial performance.

### The Work Foundation

The Work Foundation (part of Lancaster University Management School) is a leading think tank looking at improving work in the UK. Researchers have launched the UK Insecure Work Index that highlights that 20-25% of workers are in insecure work which could be from employment contracts, low wages or lack of workers rights. Insights are to raise awareness of an increase in insecure work, and the impact on specific groups of people including disabled people, ethnic minority groups and young people.

## Teaching

### Sustainable business

Many of our degree options at Lancaster University Management School teach sustainable and ethical business practices, in order to inspire future leaders of industry. For example, our Management and Human Resources degree has a module on business ethics and another module on global corporate social responsibility.

## Public Engagement

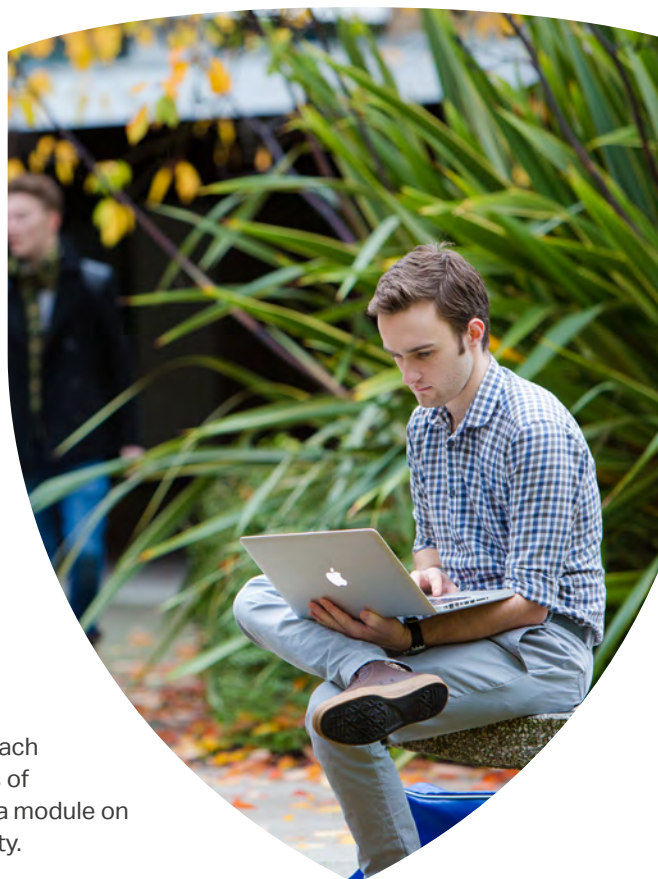
### Journeys to Net Zero: Collaboration Showcase

From battery technology to biomimicry and nature-inspired architecture, the 'Journeys to Net Zero: Collaboration Showcase' brings together businesses, academics and researchers in a celebration of ground-breaking collaborative R&D projects delivered through the Lancaster University-led £14 million Eco-I North West programme. Eco-I NW is a £14m programme of innovation support to North West SMEs and has so far supported over 130 businesses across the region.

## University Operations

### The Careers and Employability Service

Lancaster's Careers and Employability Service is available for specialist career advice, exploring study options, career events and work experience opportunities. Our CV360 portal allows students to upload their CV to receive personalized insights into how to improve it – from spelling and grammatical changes, to tips on including skills.



# SDG9 – Industry, Innovation and Infrastructure

Build resilient infrastructure and sustainable industrialisation



## Research

### Soil in construction

Academics at Lancaster University have been working on a plan to put a healthy respect for soil at the centre of planning and construction. Soils are non-renewable and offer a host of important eco system services, such as locking up carbon and helping to prevent flooding. The task force is launching a new report which highlights existing problems and lays out a roadmap to minimise soil damage and ensure future building work supports the needs of people and the natural environment.

### Resilient Cities

Our Future Cities Research Institute is a joint partnership between Lancaster University and Sunway University in Malaysia. One area of research they focus on is resilient cities and how to make cities as well as communities and citizens more resilient, agile and adaptable to climate change and other global challenges, such as future pandemics.

## Teaching

### Sustainable computing

The new Cyber Security degree is designed for the cyber security systems engineers and architects of the future. The course has a module called Sustainable Computing, focusing on key concepts associated with creating sustainable computing and how computers shape a greener economy and society.

## Public Engagement

### Smart materials

A new £4.4 million programme - Greater Innovation for Smarter Material Optimisation (GISMO) will engage with 250 SMEs in the Cheshire and Warrington areas. Successful businesses will gain access to research and development expertise and specialist technology to solve industry-driven challenges through innovations in 'smart' materials.

## Campus Operations

### Construction

From 2023 onwards, the University has committed to significantly less construction of new buildings, and more focus on repurposing existing buildings and upgrading them to be more energy efficient and better suited for purpose. If we build new projects, they will be required to be via low-carbon construction techniques.

We estimate the carbon over the next 5 years from refurbishment from recycling and repurposing existing space is c80% less than the last 5 years.





# SDG10 – Reduced Inequalities

Reduced inequalities within and among nations



## Research

### Making hybrid working inclusive

New research from The Work Foundation, a leading think tank at Lancaster University, dedicated to improving work in the UK, has found disabled people bore the brunt of the pandemic's economic consequences and experienced higher rates of unemployment and redundancies than non-disabled people. The report concludes with practical steps for employers to take to ensure their approach to hybrid and remote working is inclusive of disabled employees.

## Teaching

### Social Work

Reducing inequalities is a theme that is embedded into many Lancaster degrees. For example, our Social Work degree has a module on Contemporary Social Problems that looks at how contemporary social problems reflect and reproduce economic and social inequalities and how those inequalities are constructed through different welfare ideologies and approaches.

## University Operations

### Equality, Diversity and Inclusion (EDI)

We are committed to creating an environment where everyone can thrive and fulfil their potential is expressed by initiatives linked with recognising and supporting protected characteristics including age, disability, gender identity, race, religion and sex and sexual orientation in alignment with the Equality Act 2010. We have several EDI-related networks and associations at Lancaster University for staff and students to connect, share best practice and network.

### Lancaster Success Programme

We offer a programme of activities to enable students from widening participation backgrounds to thrive during their studies and successfully progress into graduate employment or postgraduate study. The Lancaster Success Programme (LSP) is designed to support students from backgrounds that are traditionally under-represented at university, who may not always be aware of the breadth of support and opportunities available to them.

### Safe Home Base

Lancaster University is committed to create an environment and culture where all students, staff and visitors feel safe, welcome and supported for who they are. We hope to create Ally Networks that can support diversity and inclusion at Lancaster. Thanks to the initiative of our LGBT Staff Network, we started by launching 'Safe Home Base', the LGBTQIA+ Ally Network.



Did you know?

- **51%** of our staff are female
- **7%** of staff have disclosed a disability
- **20%** of staff are of a non-UK nationality



# SDG11 – Sustainable Cities and Communities

Make cities inclusive, resilient and sustainable



## Research

### Air pollution near schools

Researchers from Lancaster University have published new evidence showing that selective planting of vegetation between roads and playgrounds can substantially cut toxic traffic-derived air pollution reaching school children and that roadside vegetation can be designed, installed and maintained to achieve rapid, significant and cost-effective improvement of air quality.

### Helping nature and people thrive in cities

A Lancaster University-led project, QUENCH, is bringing academics and practitioners together to find answers to how the quality of green spaces in cities affects the benefits we get from them and how the health of nature affects our own feelings of connection with nature, and our health. The project will help create urban environments that are good for people and ecosystems.

## Teaching

### Sustainable cities

Many of our degrees focus on cities and spaces of the future in the face of environmental challenges. For example, our Human Geography degree, has a module called Society and Space that focuses on the interactions between society and space, and between people and places at a variety of spatial scales and in different parts of the globe.

## Public Engagement

### Community Benefits Fund

Each year, our Community Benefit Fund allocates up to £20,000 to Lancaster District-based not-for-profit organisations, charities, trusts, community groups or voluntary organisations to support sustainable projects, large and small. The funding really makes a difference to the local area, whether that's through funding new charging points for electric vehicles or contributing towards refurbishment projects to improve energy efficiency.

## Campus Operations

### Sustainable Travel

We have made significant investment in sustainable travel on campus and for staff, students and visitors commuting to campus. There are over 1500 dedicated bicycle parking spaces, across more than 80 locations on campus and dedicated cycle lanes between the University and the city centre for easy access. Dr Bike holds weekly sessions on campus for bike maintenance and expert advice. Around 500 staff and more than 1000 students enjoy cycling to campus.



# SDG12 – Responsible Consumption and Production

Ensure responsible production and sustainable consumption



## Research

### Reducing plastic packaging

The Plastic Packaging in Peoples' Lives (PPIPL) project focuses on how plastic food packaging is embedded in consumers' day-to-day lives. Working with stakeholders along the supply chain, they will provide valuable insights to increase collaboration and share understanding along the UK food plastic packaging supply chain in order to create a sense of shared responsibility and improved packaging options.

## Teaching

### Consumer Culture

Responsible consumption and sustainable behavior is embedded into teaching modules across the university. For example, our Sociology degree has a module on Consumer Culture that looks at advertising and how this impacts consumption behavior and shopping culture.

## Student Engagement

### Don't Ditch It

Every year the Don't Ditch It project collects more than 20 tonnes of unwanted items from students across campus and diverts them from landfill to be repurposed and resold in our ECOShop. Hosted by Green Lancaster and run by students, the shop sells a wide range of repurposed donations from the Don't Ditch It project, including books, electrical items and bedding that were donated to be reused by others.



## Campus Operations

### Zero Waste Shop

Run by Lancaster University Student's Union, we now have the Zero Waste shop inside the Central Supermarket. Featuring a dried goods dispensary alongside a range of zero waste soaps and toiletries. The wooden units were also created from reclaimed furniture.

### Electric Waste

The University has worked closely with the City Council to manage waste on campus with electric trucks – heavily reducing carbon emissions. The trucks can collect up to 10 tonnes of waste at a time, and from just a single charge of electricity are capable of a full 10-hour shift, lifting around 1500 bins.

Did you know?

- Over **70%** of waste is recycled
- **35 tonnes** of waste was diverted from landfill for reuse in 2021
- In 2021, **6300kg** of clothing items were collected from campus to donate to local charity shops

# SDG13 – Climate Action

Take urgent action to combat the climate emergency



## Research

### Tracking melting ice

An international research team including academics from Lancaster have been studying the impact of climate change on the lakes around the East Antarctic Ice Sheet. The study provides vital insight into why and where lakes grow, and will help experts understand which ice shelves may be most at risk of breaking up as a consequence of surface melting.

## Teaching

### Climate emergency teaching

Our degree options run through The Lancaster Environment Centre, focus on teaching about global challenges such as climate change, sustainable development, resource provision, and natural hazards. For example, our Ecology and Conservation degree runs field trips to places such as the Doñana National Park in Spain to spot and learn about endangered wildlife and plants.

## University Operations

### Net-zero commitment

At Lancaster, we recognise that sustainability, the climate emergency and our environment is the responsibility of our whole community. Our commitments are already leading the way; Lancaster University is one of the highest producers of renewable energy out of all UK Universities, and since 2005 we've reduced our electricity and heating emissions by 50%. We know there's more we need to do, that's why we're committed to becoming carbon neutral by 2035.

### Travel decision tree

Lancaster Environment Centre (LEC) have developed a travel decision tree to assist with decision-making about travel modes and alternatives to business and academic travel across the University. We implemented this with our business travel team in order to promote sustainable travel options.

## Student Engagement

### Green Lancaster

Green Lancaster is a partnership between Lancaster University and the Students' Union devoted to engaging students, staff, and the local community in practical responses to the climate and ecological emergencies. Their community is full of determined, forward thinking people who all share a common desire; to make a difference. From planting trees on campus, to campaigning for action on climate change.

### Climate Action Society

Lancaster University Climate Action Society (LUCAS) offers a community to like-minded students who wish to engage in learning more about the climate crisis whilst offering a fun and friendly community where they can meet new people. They run educational events such as climate talks by professionals, friendly debates and discussions, as well as promotion of things we can all do to reduce our environmental impact.





# SDG14 – Life below water

Conserve and sustainably use the oceans, seas and marine resources



## Research

### Marine biodiversity

An international team of experts, including academics from Lancaster, have researched and identified a list of 15 issues they believe are likely to have a significant impact on marine and coastal biodiversity over the next five to ten years. Their 'horizon scanning' technique focuses on identifying issues that are not currently receiving widespread attention, but are likely to become important over the next decade. The aim is to raise awareness and encourage investment into full assessment of these issues now, and potentially drive policy change, before the issues have a major impact on biodiversity.

### Fishing and malnutrition

An international team of researchers including academics from Lancaster, have identified evidence that shows that foreign fishing (fleets fishing in foreign waters) and international seafood trade exacerbate nutrition insecurity, taking fish away from the waters of nations experiencing high prevalence of malnutrition and diverting the catches predominantly to wealthier countries. The researchers also modelled the effects of climate change, which is predicted to lead to overall declines in fisheries production. This evaluation exacerbates the nutrient vulnerability of many nations, with the greatest impacts on tropical countries and small island states such as Papua New Guinea and Guyana.



## Teaching

### Aquatic life

Our degree options run through The Lancaster Environment Centre, focus on teaching about global challenges such as climate change, sustainable development, resource provision, and natural hazards. For example, our Earth and Environmental Science degree has a module on Aquatic Biogeochemistry, where students learn about the chemical composition of aquatic systems in nature – and how to look after them.

## Student and Staff Engagement

### The Bay

Green Lancaster's ECOWild project has connected with Cumbria Wildlife Trust's team of the project 'The Bay: A Blueprint for Recovery', a Nature and Wellbeing Programme to offer trips for students and staff to Walney Island, where they carried out a shoresearch survey to look at a wide array of fascinating creatures and plants among the rock pools and interact with nature while also contributing to vital initiatives around the nation addressing the Climate and Ecological Emergency.

## Campus Operations

### Food on campus

In all our food outlets on campus, no fish is served from the Marine Conservation Society 'fish to avoid list'. Local and sustainable suppliers are used for all our fish, wherever possible.



# SDG15 – Life on land

Protect, restore and promote the sustainable use of land ecosystems. Reverse biodiversity loss and land degradation



## Research

### Amazon rainforest ecosystem

A major study assisted by researchers from Lancaster, into landscape changes in the Brazilian Amazon, has shed new light on the many environmental threats the biome faces – but also offers encouraging opportunities for ecological sustainability in the world's most biodiverse tropical forest. The study's findings are critical because as the Amazon moves closer towards a 'tipping point', they provide a robust evidence base to inform urgently needed conservation and regeneration priorities in the forest.

### Biodiversity in solar farms

Lancaster University researchers have helped to develop a new standard approach to assess how solar farms affect biodiversity. New guidance from the research will help guide solar farms in how to better understand the ecological potential of solar farms; including protecting mammals, encouraging habitats for breeding birds and planting wildflowers.



## Student and Staff Engagement

### ECOWoods

ECOWoods is a project run by Green Lancaster to restore and maintain the natural landscape across campus and the nearby University-owned Forrest Hills. Volunteer staff and students have planted more than 4000 trees over the last 3 years to build natural habitats and promote biodiversity.

## Campus Operations

### Green Flag Award

Our outdoor spaces on campus have received the Green Flag Award for the eleventh year in a row – the international benchmark for the quality of green spaces.

### Hedgehog Friendly Campus

Our campus is 'Silver Accredited' by the national Biodiversity Programme; Hedgehog Friendly Campus. The campaign is coordinated by the British Hedgehog Preservation Society (BHPS) and assesses institutions across the Higher Education sector, recognising sustainable processes and practices that protect hedgehogs and allow them to thrive.

Did you know?

- Over **4000** trees planted in the last 3 years
- **2.6 mile** woodland trail around the edge of campus
- **'No Mow Zones'** to encourage wildflowers on campus

# SDG16 – Peace, Justice and Strong Institutions

Promote peaceful and inclusive societies and provide access to justice for all



## Research

### Sustainable citizenship

Researchers from Imagination Lancaster have been involved in a research project to look at public policies and how these impacts young people in London – and how this could be mapped against sustainability into sustainable citizenship. Youth, democracy, and sustainable citizenship: reimagining the city and empowering young people through engagement with policy-makers is a one-year research project funded by the British Academy, and the Department for Business, Energy and Industrial Strategy, and framed around the theme of 'What is a good city?'

### Family Justice Data Partnership

Researchers from Lancaster's Child and Family Justice Research Centre have been looking into the family justice system and the impact on families using these services. The Family Justice Data Partnership aims to improve understanding using data, of the family justice system and use this data to assist with future policy development.

## Teaching

### Peace studies

We're committed to teaching about fairer societies and ways to improve life for others. For example, our Peace Studies and International Relations degree, examines peace and conflict resolution, human rights and how sustainability and global changes will impact societies.

## University Operations

### Sustainable investment

Following our declaration of the climate emergency, the University has taken further steps in its commitment to sustainability by transferring all its managed investment portfolios to two new funds designed to have a positive impact on people and the planet.

### Governance

We've a duty to conduct our affairs in a responsible and transparent way. The Council is our governing body, carrying ultimate responsibility for our overall strategic direction and for the management of the university.



# SDG17 – Partnerships for the Goals

Global partnerships for sustainable development

17 PARTNERSHIPS FOR THE GOALS



## Research

### Government Partnerships

Roger Kemp, Emeritus Professor in the School of Engineering, is a member of the National Engineering Policy Centre working group on decarbonisation policy. The NEPC is a partnership of 42 professional engineering organisations, led by the Royal Academy of Engineering, which informs government policy. Professor Kemp is a member of a small group briefing government ministers on aspects of energy policy, with the latest NEPC report examining the role of hydrogen in the push for Net Zero.

## Global

### South Korean Partnership

A partnership and Memorandum of Understanding (MoU) has been signed between Lancaster University and Konkuk University, South Korea. The universities will work together with a remit to explore how mobilities research can be used to help tackle the global challenges relating to mobility futures such as the climate emergency, displacement and mobility justice.

## Teaching

### Overseas teaching partnerships

Lancaster is constantly developing partnerships across the world to ensure it delivers teaching that takes students to the frontiers of knowledge and produces graduates who can compete in a global job market. In addition to numerous international research partnerships, Lancaster has four strategic overseas teaching partnerships offering validated Lancaster degrees in China, Germany, Ghana and Malaysia.



- **Lancaster University, Leipzig, Germany – Offers four Lancaster-accredited degrees taught by the university.**
- **Lancaster University, Ghana – The first British university branch campus in Ghana allows students to access Lancaster’s teaching and research excellence.**
- **Lancaster University College, Beijing Jiatong University, China – A joint institute. Students receive a degree from both institutions and a joint academic transcript.**
- **Sunway University, Malaysia – Academic partnership where students can study on a range of undergraduate degree schemes and graduate from both universities.**

## Global experiences

Coming to Lancaster is all about broadening your horizons, learning new subjects, finding new perspectives and discovering new experiences as part of a community that reaches around the world. We have students from over 100 countries, so students have every chance to make international connections, on their course, in societies or socially.

Students might spend a few weeks abroad as part of their course, or even study for a whole year with one of our partner institutions around the world.



Lancaster University, Lancaster, LA1 4YW

+44 (0)1524 65201

[lancaster.ac.uk/sustainability](https://lancaster.ac.uk/sustainability)

**Natalie Bauer**

**October 2022**