

Portfolio Advice

BA (Hons) Architecture



School of
Architecture

Lancaster
University



YOUR PORTFOLIO

Your portfolio may be made up of **previous work** you have completed during your time at school or college. You may wish to **curate** this work to focus on the parts of that you think represent your work best. If you have not completed an arts-based course, do not let this worry you, as we wish to understand how work you have completed represents your **ideas and critical thinking**. You may include a wide variety of media, including photos, sketches and essays to represent this in the best possible way.

07:00 AM
Wake up / Get Ready



10:00 AM
Collaborate in the Studio



14:00 PM
Answering Emails and Online Conference Calls



18:00 PM
Make Dinner



08:00 AM
Make Breakfast



11:00 AM
Answer Calls and Emails



15:00 PM
Collaborate in the Studio



09:00 AM
Opening up the Studio



12:00 AM
Working Lunch Break



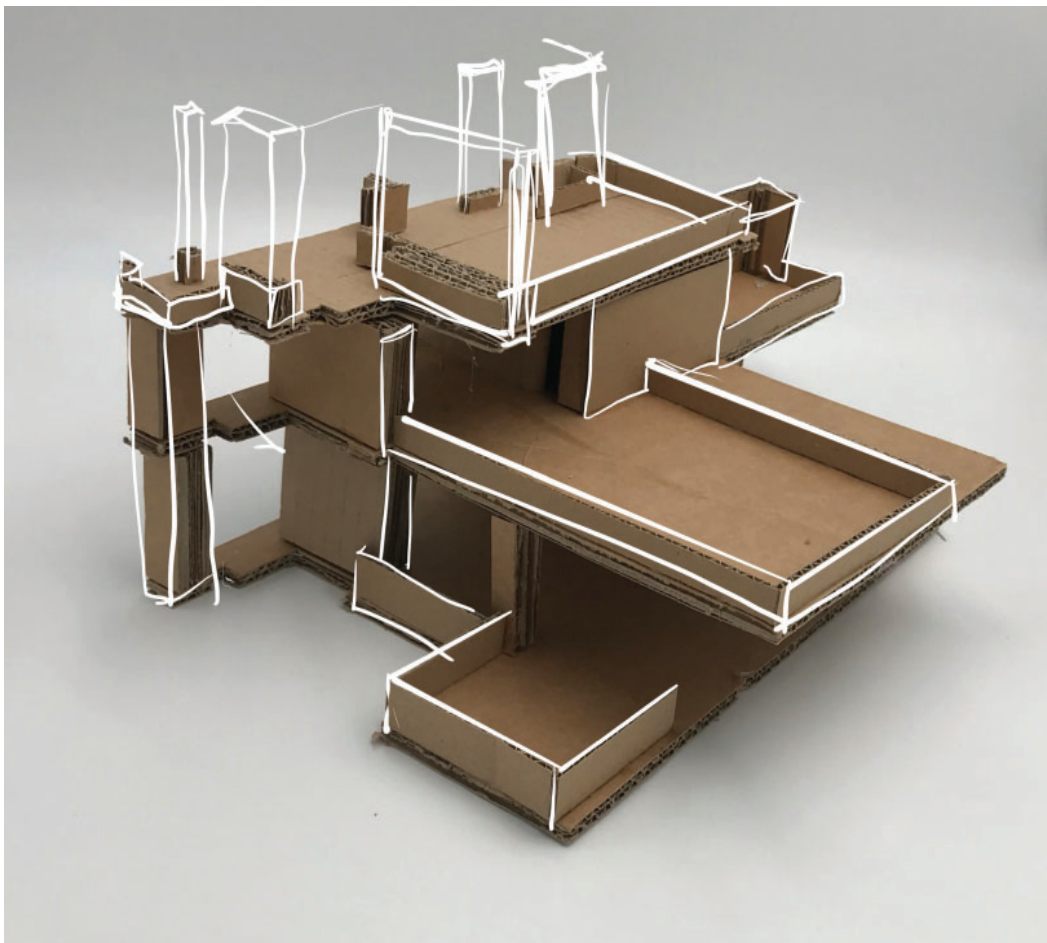
17:00 PM
Shutting the Studio



21:00 PM
Get Ready for Bed



AT LEAST SEVEN PIECES OF WORK



- Your portfolio should include a *minimum* of seven pieces of work.
- We are more than happy to review an **existing portfolio** you have created as part of an Arts or Design course for your school or college.
- We are looking at how **creative** your work is and how it might reflect your **critical thinking skills**. We wish to see a range of media used.
- If you have not produced a portfolio before, refer to the list of possible outputs on page 6 of this document. Your portfolio might include photos or creative writing pieces.
- Think carefully about how to **curate and label** your portfolio.
- We receive a high volume of portfolios from applicants each year, so you may wish to think how to make your work **distinctive** and individual to you.

The portfolio is not the only piece of work we take into account when considering your application: if we invite you to interview, we will ask you to speak through your work to tell us a little more about your ideas and the work you have completed. Interviews typically last no more than 20 minutes, and give you an opportunity to ask us any questions you might have about the course.

TYPES OF WORK YOU MIGHT INCLUDE...

- Hand Drawings (e.g pencil, pen)
- Scanned pages from your sketchbooks
- Photos of hand-made models (e.g card, paper)
- Photography (e.g portraiture, landscape)
- Collages (e.g Photoshop)
- Graphic Design (e.g branding and typography)
- Creative Writing (e.g essays and poetry)
- Paintings (e.g oil, watercolour)
- Storyboards of film or media
- Technical Drawings (e.g sections, plans)
- 3D models created in software (e.g 3DMax)
- Technical Reports (e.g design and testing)

You may include a **wide variety** of work as part of your portfolio submission: the following list gives some indication of the range of work that you might consider. It is important that your work gives us an indication of your **creative ability, critical thinking** and your **range of representational skills**. We would advise against including too many of the same type of drawing, e.g building plans or 3D models.



FORMAT OF PORTFOLIO

WHAT SHOULD MY PORTFOLIO LOOK LIKE?

There is no set way to present your portfolio. Applicants may wish to attend their interview with a bound folio of work in chronological order. Others may wish to create their own portfolio and bind their portfolio sheets together. It is entirely up to you how to present this but we advise against spending excessive amounts of money. A simple 'bulldog clip' is more than sufficient to keep your sheets together at interview. We are not able to receive very large pieces or models of your work: please take photos of the original work if it is over-sized.



School of
Architecture

Lancaster
University

