



Lancaster  
University



WELCOME TO THE  
**ALUMNI REUNION  
WEEKEND 64 | 24**

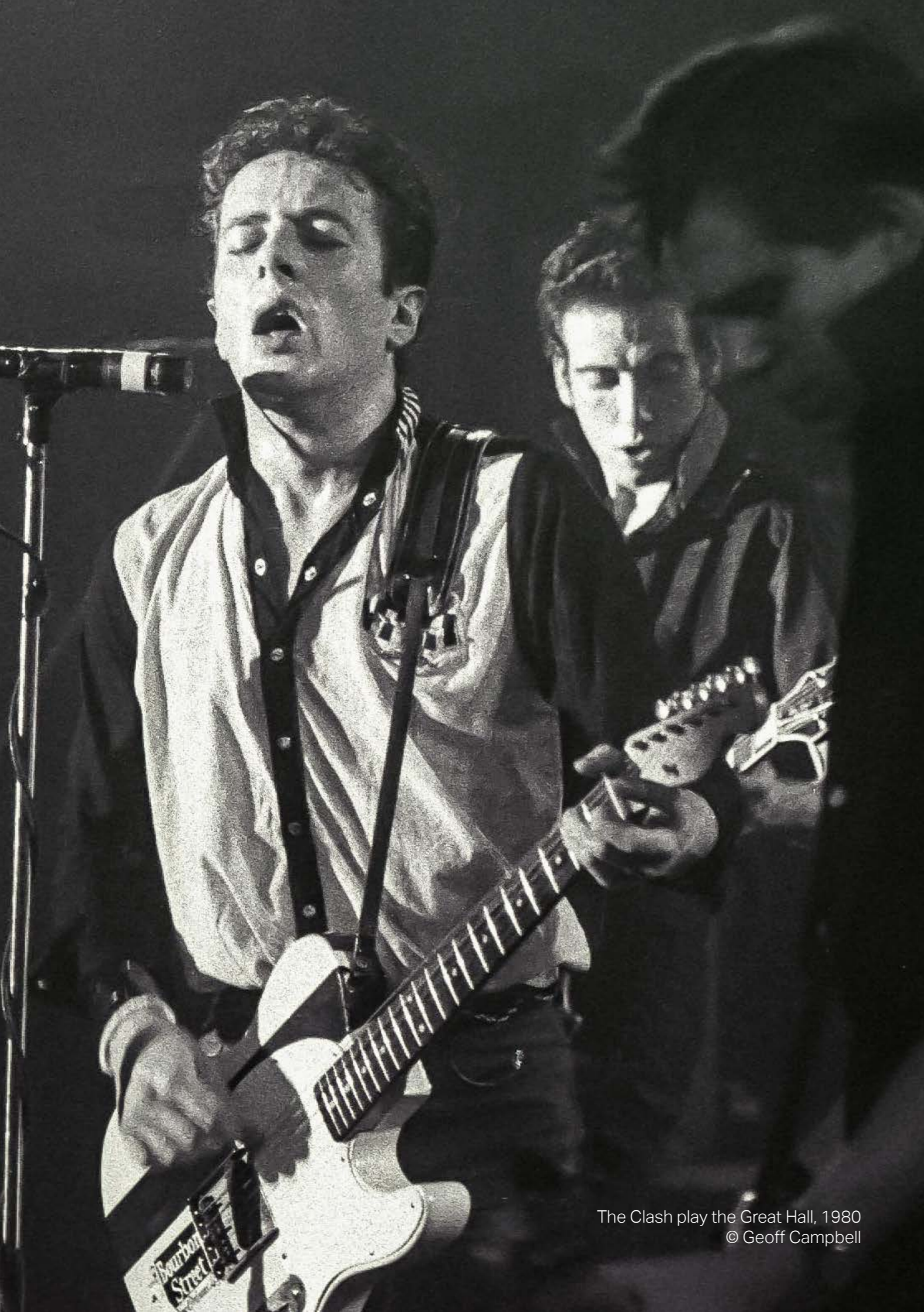
LANCASTER UNIVERSITY  
FRIDAY 13 SEPTEMBER  
SATURDAY 14 SEPTEMBER

**ALUMNI REUNION  
WEEKEND 64 | 24**

**LANCASTER UNIVERSITY**

FRIDAY 13 SEPTEMBER  
SATURDAY 14 SEPTEMBER

**ADMIT ONE**



The Clash play the Great Hall, 1980  
© Geoff Campbell

Friday 13th September

**ALUMNI DROP-IN  
WELCOME RECEPTION**  
**GREAT HALL FOYER**  
**3PM - 8.30PM**

ADMIT ONE



Drop-in reception

A friendly face and a warm welcome back to campus!

**OPENING NIGHT  
BOWLAND COLLEGE**  
**5PM ONWARDS**  
**FOLK SOCIETY LIVE 7PM**

ADMIT ONE



Bowland Bar



Pendle & Grizedale, 1978



Library Catalogue

**COUNTY BAR**  
**OPEN 3-6PM**

ADMIT ONE

**PENDLE BAR**  
**OPEN 6PM ONWARDS**

ADMIT ONE

### Library Festival

The library will be hosting a festival on Friday and Saturday – all alumni welcome. Enjoy interactive exhibits, engaging activities, insightful talks, live music and our very own Race Across the Library (Friday only) and more!

Special Collections and Archives will be open for drop-in visits. The Archive may be of particular interest to alumni – displays on the University's history will be available.

Scan for Library Festival schedule



## Saturday 14th September

### Alumni Reunion Hub

9:30am – 1pm

The alumni team will be hosting the alumni reunion hub in **Barker House Farm, Cartmel College** on South West campus.

Come along between 9.30am - 1pm for tea, coffee, pastries and biscuits.. Archive displays and info point for the weekend's activities.

### Bowland and Lonsdale Colleges Hub

10am – 3pm

Morning tea and coffee and Danish pastries available in Bowland Common Room (Bowland Main).

Meet staff and view college archive displays.

Bar open from 12 noon.

Tours of Bowland Tower will be running - book a spot online (limited places available).



Scan to book a tower tour

### University Open Day

10am – 4pm

We are hosting an Open Day for prospective students – all alumni are welcome too! The full Open Day schedule is online and you will be able to pick up a printed copy at our welcome receptions on either Friday or Saturday. You may like to visit your old department or even attend a subject talk to find out more about Lancaster's courses today!



Scan for Open Day schedule

### Pendle College Hub

5pm onwards

Welcome back to Pendle! The College will be open from 5pm (although you will probably find staff around during the day, getting set up for the evening celebrations!).

Meet staff and view college archive displays.

College merchandise will be on sale between 5-6pm.



### 3 Bowland College

Bowland and Lonsdale will be hosting their joint 60th anniversary celebration with the evening's entertainment in Bowland bar and social space. Expect relaxed, feelgood vibes from fantastic live music.

Celebrations start at 5pm with the early music slot from 5.30pm – 7.30pm with Fred and Friends, an all-alumni band playing swinging standards from the Great American Song Book, along with Gershwin to Ed Sheeran, Nat King Cole to Bruno Mars. Jazz, blues, pop!

There will be welcome messages from Bowland College Principal, Dr Casey Cross and Lonsdale College Principal, Sherry Currington.

The Billionaires will be entertaining you from 8pm – 10pm with jazz, swing and pop classics. Light refreshments (cheese and biscuits) provided.

### Pendle College

Pendle will be celebrating its 50th anniversary in style! The younger sibling to Bowland and Lonsdale, Pendle will be the live music venue for dancing!

Celebrations start at 6pm with a welcome from Pendle College Principal, Martin Colclough and cake cutting.

Followed by live music from 8pm with The Howling Clowns and The Usuals: two fantastic local bands who cover music from the 60s, 70s, 80s, 90s, Rock & Pop, Disco & Soul! Loaded veggie nachos available to purchase from the bar until 9pm.

# All alumni welcome!



College Room 1972



Frankland Lecture Theatre



Bowland Tower 1967

## Getting around campus

We particularly recommend using MazeMap when you are on campus for finding your way around. Campus may be somewhat different and vastly larger than when you studied here!



## Parking on campus

Parking on campus will be free on Friday 13th, Saturday 14th and Sunday 15th September. If you are parking on campus on any other days, please use the pay and display ticket machines.

Please note: on Saturday 14th September campus will be very busy with Open Day visitors. We suggest you park on South West Campus, entrance off Hazelrigg Lane (which is where the alumni hub will be situated). From here shuttle buses will be running to main campus or it is around a 10-15 minute walk.

Due to building work for the University's solar farm there is no vehicular access from South West campus to or from the main campus perimeter road. Please use Hazelrigg Lane and the A6 for access.

## Shuttle buses

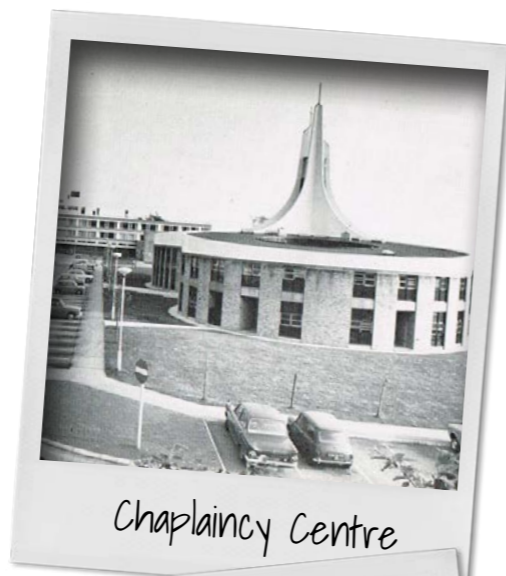
On Saturday 14th September, shuttle buses will be running around the perimeter road between South West campus and Main campus from 9am until 6pm.

You can hop on and off at the following stops:

- Cartmel Avenue, South West Campus
- The Chaplaincy Centre
- Lancaster Institute of Contemporary Arts
- George Fox Avenue
- Info Lab, South Drive
- The Management School

## Buses to Lancaster City Centre

Stagecoach routes 1/1A, 100, 4, 4X, 40, 41 and 42 serve the University. Stagecoach buses depart from the underpass. Services 100 and 42 (along with certain 4, 40 and 41 journeys) also serve South West Campus.



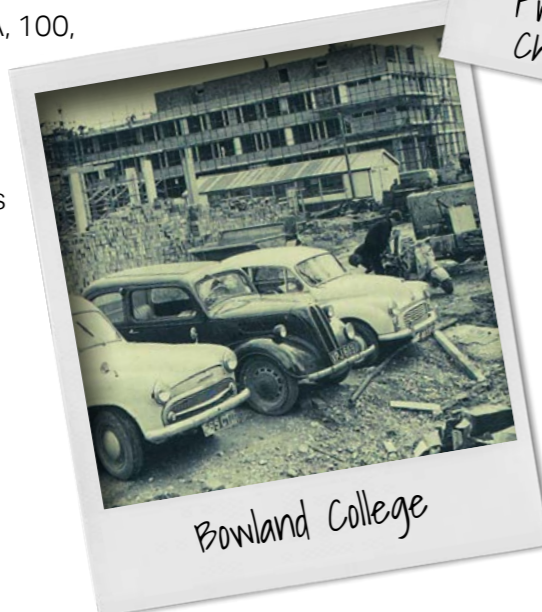
Chaplaincy Centre



Great Hall



Princess Alexandra, Chancellor 1964-2004



Bowland College



The Pretenders play the Great Hall

## Ticketed Events

### Pre-booking essential

If you have pre-booked tickets for the talks, afternoon tea or guided tours, please collect them at either the Friday alumni reception or Saturday alumni hub.

### Talks

Saturday 14th September, 11am

History of the University

Marion McClintock

Saturday 14th September, 1pm

The Bands who Played Lancaster University

Barry Lucas

### Alumni Afternoon Tea

Saturday 14th September 3 - 5pm

Hosted by the Vice-Chancellor  
Pre-booked tickets required

The talks and afternoon tea both take place in Barker House Farm, Cartmel College, South West Campus

### Guided Campus Tours

Saturday 14th September

10am and 12 noon

Tours start at the Alumni Meeting Point at the Chaplaincy Centre. Pre-booked tickets required.

### Where To Buy Your LU Merch

Re:Store, Alexandra Square

(next to Costa)

The sustainable, campus shop where you can buy Lancaster memorabilia from hoodies and t-shirts to cuddly ducks and much more!

Friday 13th September, 11am – 5pm

Saturday 14th September, 9.30am – 4pm

**The Post Office also sells University merchandise, including ties!**

Friday 13th September, 9.30am - 5.15pm

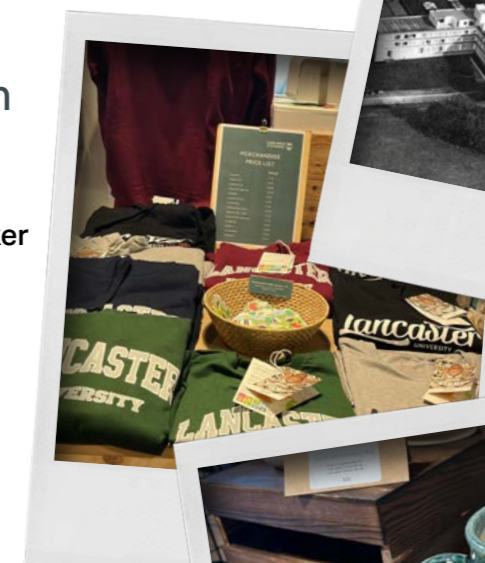
Saturday 14th September, 9.30am - 12.15pm



Bailrigg site



Campus



Re:Store



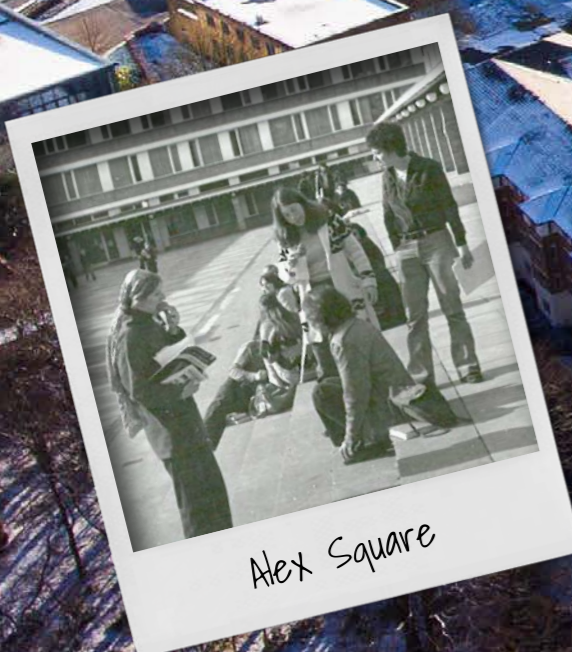
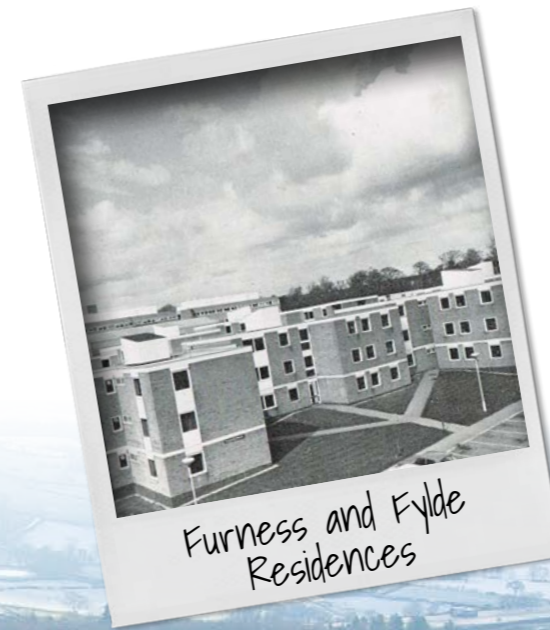
## Self-Guided Campus Tours

Take a self-guided campus tour at your own pace. This tour has been created especially for the reunion weekend. You'll be guided to key locations to see what they are like today and can see online photos of how they looked in the past (or even under construction!).

The tour starts at the Chaplaincy Centre and the duration is around 50-60 minutes but how long it takes you is up to you. It covers a distance of around 1.5 miles.



Scan to start Campus Tour

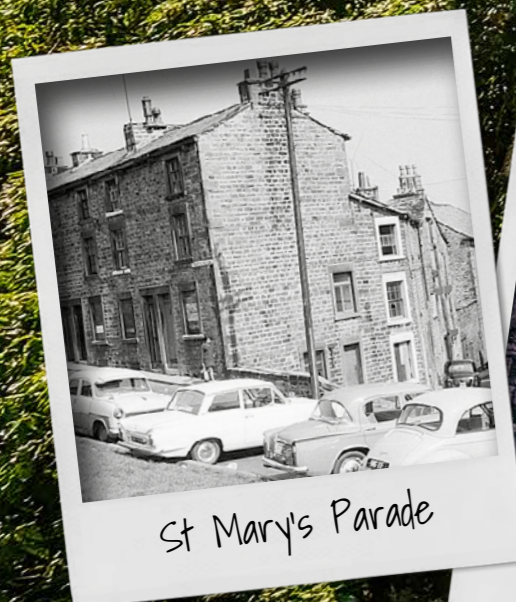


## Self-Guided City Tour

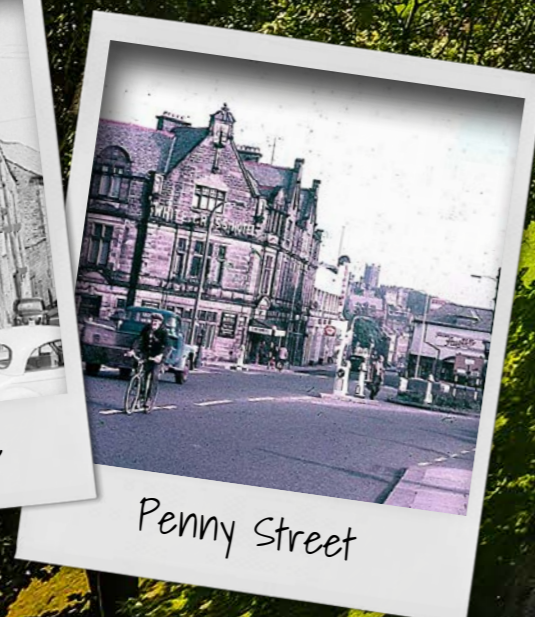
See what life in Lancaster is like for students today! This self-guided tour is designed for prospective students to show them what life is like in Lancaster... you may be surprised at what has changed and what hasn't!



Scan to start City Tour



St Mary's Parade



Penny Street



Williamson memorial

## Places to eat on campus

### Friday 13th

Marketplace	7.30am - 10.30am and 12.00pm - 2.00pm
Costa Coffee, Alex Square	8.00am - 5.00pm
The Deli	8.30am - 3.30pm (Food served up to 3.00pm)
The Mill at Fylde College	12.00pm - 10.00pm (Food served up to 6.45pm)
Pendle Brew	9.00am - 2.00pm
Friends Bistro	11.00am - 10.00pm
Sultan of Lancaster Experience	11.00am - 11.00pm
Pizzetta Republic	11.00am - 11.00pm
Coastal Coffee, Alex Square	8.00am - 5.00pm
Guan Zi Chinese Restaurant	11.00am - 3pm and 5.00pm- 9.30pm
Wok lin	10.30am -10.00pm

### Saturday 14th

Marketplace	8.00am - 11.00am and 12.00pm - 2.00pm
Costa Coffee, Alex Square	10.00am - 5.00pm
The Deli	8.30am - 3.30pm (Food served up to 3.00pm)
The Mill at Fylde College	12.00pm - 10.00pm (Food served up to 6.45pm)
Pendle Brew	5.00pm - 11.00pm (Food served up to 9.00pm)
Friends Bistro	11.00am - 10.00pm
Sultan of Lancaster Experience	11.00am - 11.00pm
Pizzetta Republic	11.00am - 11.00pm
Coastal Coffee, Alex Square	8.00am - 5.00pm
Guan Zi Chinese Restaurant	12.00pm - 4.00pm and 5.00pm-9.30pm
Wok lin	10.30am - 10.00pm

### Sunday 15th

Marketplace	8.00am - 11.00am for breakfast
Costa Coffee, Alex Square	10.00am - 5.00pm
The Mill at Fylde College	12.00pm - 10.00pm (Food served up to 6.45pm)
Friends Bistro	11.00am - 10.00pm
Sultan of Lancaster Experience	11.00am - 11.00pm
Pizzetta Republic	11.00am - 11.00pm

## The food

### The Deli

The Deli serves barista Atkinson's coffee, specialty teas, and a brunch menu boasting American-style pancakes, homemade soup and tartlets, scrambled eggs or tofu, mac n' cheese, flatbreads, sandwiches, refreshing salads, and more.

### Friends Bistro

Serving fried chicken dishes, burgers and kebabs with sit-in facilities.

### Marketplace

The Marketplace offers a fresh daily changing menu with hot options both sweet and savoury and a healthy salad bar.

### The Mill at Fylde College

The Mill is a sports bar selling specialty burgers and their famous all-day breakfast.

### Pendle Brew

This outlet is 100% vegetarian and vegan friendly and operates as both a cafe serving barista coffee, and a bar serving alcohol.

### Pizzetta Republic

Restaurant offering fresh coffee, pizzas and more.

### Sultan of Lancaster Experience

A food outlet that specialises in grilled foods such as sizzlers, steak and shawarma. Sultan's also serves a wide variety of curry dishes. *We are offering alumni a 10% discount if they spend over £8pp (terms and conditions apply) show the brochure or your Alumni lanyard and code ALUMNI2024*

### Wok lin

Noodle and rice dishes for take away (some limited seating).

### Guan Zi Chinese Restaurant

Traditional Chinese food to eat in or take away.

## Support Our Students

The **Lancaster University Opportunity Fund** helps to support students from all backgrounds, creating an inclusive and diverse community.

You can make a real impact on student lives by donating to the Lancaster University Opportunity Fund. Funding goes directly to student support to projects like the **'Lancaster Success Programme'** which works with students from backgrounds typically underrepresented at university to help them get the most out of their university experience.

Donate online at [www.lancaster.ac.uk/giving/opportunity-fund](http://www.lancaster.ac.uk/giving/opportunity-fund)



Scan to donate

*"My scholarship has really helped me with living expenses. Your generosity inspires me to strive for academic excellence. Your support makes such a difference to students like me, and I deeply appreciate your commitment to education."*

**Connor Winter, Scholarship Recipient**



Scan to find out more

## Volunteer

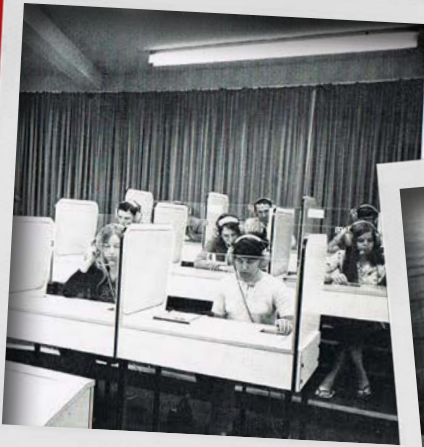
From running a local alumni network to mentoring a student or offering a work placement to helping us at student recruitment events, we have a variety of volunteer opportunities for alumni.

Find out more at [www.lancaster.ac.uk/alumni/volunteer](http://www.lancaster.ac.uk/alumni/volunteer) or email [alumni@lancaster.ac.uk](mailto:alumni@lancaster.ac.uk)





# Celebrating Glorious Years



Learning Aids Building



The Chaplaincy



Teaching Science



Campus



BBC Northern  
Symphony Orchestra



Chemistry Foundations

## Keep in touch with your University

[lancaster.ac.uk/alumni](http://lancaster.ac.uk/alumni) or email [alumni@lancaster.ac.uk](mailto:alumni@lancaster.ac.uk)

 [LancasterUniversityAlumni](#)  [LancasterUniversityAlumni](#)  [@Lancaster Uni](#)

