



UN Sustainable  
Development Goals

---

# Introduction

The United Nations Sustainable Development Goals (SDGs) are a call to global action to overcome the world's biggest challenges — from hunger and poverty to equality and environmental action.

We are working with our research communities, external partners, students and colleagues on various projects that help towards achieving these goals - and aligning our sustainability strategy to enable this.

“

Lancaster University is committed to playing a key role in tackling the climate crisis by addressing the Sustainable Development Goals across our teaching, research and engagement and through the way we manage and operate our University as an organisation.

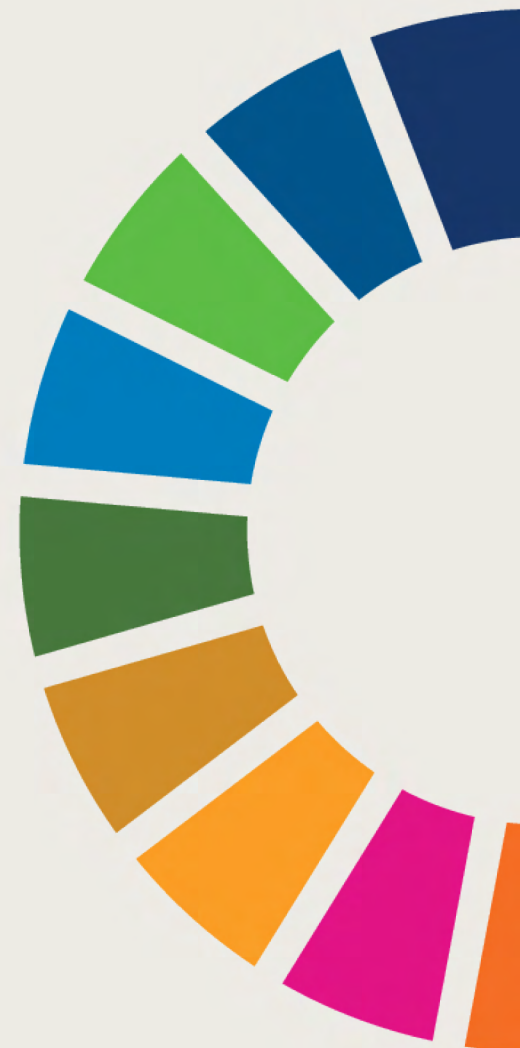
**Professor Simon Guy**

Pro-Vice-Chancellor Global (Digital, International, Sustainability)

”

- SDG1** – No Poverty
- SDG2** – Zero Hunger
- SDG3** – Good Health and Well-being
- SDG4** – Quality Education
- SDG5** – Gender Equality
- SDG6** – Clean Water and Sanitation
- SDG7** – Affordable and Clean Energy
- SDG8** – Decent Work and Economic Growth
- SDG9** – Industry, Innovation and Infrastructure
- SDG10** – Reduced Inequalities
- SDG11** – Sustainable Cities and Communities
- SDG12** – Responsible Consumption and Production
- SDG13** – Climate Action
- SDG14** – Life below water
- SDG15** – Life on land
- SDG16** – Peace, Justice and Strong Institutions
- SDG17** – Partnerships for the Goals

3  
4  
5  
6  
7  
8  
9  
10  
11  
12  
13  
14  
15  
16  
17  
18  
19



# SDG1 – No Poverty

End poverty, in all forms, everywhere



## Research

### Inequality research

The Centre for Alternatives to Social and Economic Inequalities (CASEI) is based in the Sociology Department at Lancaster University and thinks globally and acts locally in researching the causes of, and offering solutions to, a range of inequalities. One area is researching the Morecambe Bay Poverty Truth Commission, that brings together a group of citizens with lived experience of poverty who meet together and share their stories with each other, with the aim to using this experience to inform local policy and work with local government.

### Alternative Entrepreneurship

Researchers from Lancaster University Management School have been researching entrepreneurs in Favelas in Rio de Janeiro who have drawn in tourists, and demonstrate how people can use entrepreneurship to help them overcome poverty and social exclusion. Their work is focused on finding out how people living in extreme conditions, manage to overcome barriers and find motivation to shape the world around them.

## Teaching

### Austerity and poverty

We're committed to teaching about poverty and ways to improve life for others. For example, our Human Geography degree, examines poverty, environmental challenges and inequalities and how this changes human geography and displacement in the developing world.



## University Operations

### Lancaster Sanctuary Scholarships

Our Sanctuary Scholarship offers students who are refugees or have humanitarian protection the support and resources they need to integrate into our community here at Lancaster.

### Student Financial Support

Students can access different grants or funds to help support personal development or assist with financial hardship from either their college at Lancaster University or Student Services. Students can also access financial support to help getting to interviews and assessment centres for graduate jobs.

### WTF: Where's The Food?

WTF is a series of free hot meal events provided by colleges and open to all students. Throughout each term, various free meals will be available - from hot breakfast rolls, to delicious evening meals.

### Free Essentials

Each college at Lancaster has an area where students experiencing financial difficulties can pick up free food and hygiene products. There are also five locations around campus, where students or staff can pick up free sanitary products. Lancaster University Students Union, offers LU Pantry - to help Lancaster University Students and staff with free food and basic hygiene products during the cost-of-living crisis.

# SDG2 – Zero Hunger

End hunger, achieve food security and promote sustainable agriculture



## Research

### Agri-Food

Agri-Food is a research theme within The Lancaster Environment Centre and from soil to sale, our researchers are helping to develop globally relevant and accessible food systems. One project is called Tomatoes for Tomorrow that looks at the increasing challenges of growing tomatoes in Mexico due to climate change, and they work to identify, characterise, protect and celebrate Mexico's unique tomato agrodiversity.

### Food security

The Food Security for Equitable Futures research team based at Lancaster University is working with two other international universities to research how food insecurity impacts children's learning. The study looking into children in India, provides evidence for policymakers to come up with proactive solutions to tackle food insecurity during the early stages of children's development.

### Tackling global malnutrition

Researchers from Lancaster Environment Centre have found that tiny fish species (e.g. herring, sardines and anchovies) are the cheapest source of essential nutrients found in sub-Saharan Africa and could be the key to tackling malnutrition in these areas.

## University Operations

### Sustainable food on campus

Lancaster University is committed to improving the availability and range of plant-based food options available across campus. Our recently updated Pendle Brew bar is now 100% vegetarian and vegan, and HIVE café has many vegan and low-sugar options. We also commit to using sustainable, local suppliers wherever possible – with specific focus on Lancashire suppliers.

## Student Engagement

### Edible Campus

The Green Lancaster ECOHub is a secluded 4000m<sup>2</sup> nature-based garden on South West Campus, with a focus on sustainable agricultural production. Edible Campus, the team behind the running of the crop planning and organic garden on site, who have been growing a wide range of fresh fruit and vegetables for many years. Boasting some 40 raised planting beds, a fruit tree orchard, soft fruits and bee hives.



Did you know?

– In 2019 the team were awarded as the **first University in the country to achieve full Allergen Accreditation** across all food on campus

# SDG3 – Good Health and Well-being

Ensure healthy lives and promote good well-being for all

3 GOOD HEALTH AND WELL-BEING



## Research

### Healthier Fleetwood

Researchers at Imagination Lancaster (a research centre at the University) research and fund a project that looks at the success and challenges of Healthier Fleetwood – a local, non-profit that aims to improve the health and wellbeing of Fleetwood; in order to suggest how to replicate this in other towns across the UK. While the focus is on Fleetwood, its similarities to other coastal and deprived neighbourhoods and towns, make this project a scalable and replicable study for other parts of the UK.

### Library of Lived Experience

Researchers from Lancaster University's Faculty of Health and Medicine have created a mental health resource called The Library of Lived Experience, where people are employed as living books, trained and supported to share their experiences with mental health in one-to-one conversations.

## Campus Operations

### Healthy Living January

Every January, we run our Healthy Living campaign for both staff and students to encourage ways to wellbeing. The sports centre puts on discounted or free taster classes, there are Walk & Talk sessions where you can enjoy some led walks around campus, tree-planting sessions and new, healthy food options to try at all our cafés on campus.

### Green spaces and woodland trail

Lancaster University is set in 560 acres of parkland with more than 35,000 trees and a 2.6-mile woodland trail around the edge of campus for students, staff and the local community to enjoy time away from studies and work. Additionally, Green Lancaster run weekly wellbeing ECOWild walks on campus which provide staff, students and the local community with the chance to identify, observe and record plant and animal sightings, whilst taking the time to intentionally connect with the rest of the natural world.

### Mobile Simulation Teaching Unit

Lancaster University Medical School has a brand-new Mobile Simulation Teaching Unit - the first of its kind in England, to help train medical students, anaesthesia associates and NHS staff. The unit can be changed to simulate different medical environments such as a hospital ward or operating theatre.



Did you know?

- **560 acre** parkland campus
- **2.6 mile** woodland trail
- **£25 million** investment in sports facilities

# SDG4 – Quality Education

Inclusive and equitable quality education and promote lifelong learning opportunities



## Research

### Community Enterprise Coaching

Research led by Lancaster University has culminated in the creation of new college courses, designed to give budding entrepreneurs from socially excluded groups a boost of confidence. The 'Community Enterprise Coaching' course at Lancaster and Morecambe College is a learning programme co-created by academics and entrepreneurs working on Elie 2.0, a Europe-wide research project to improve the chances of marginalised groups setting up their own businesses.

### Innovation in adult social care

Academics from Lancaster University Management School have launched a new app, designed to improve innovation across the adult social care sector. The aim of the app is to provide a safe space for practitioners to share knowledge and access vital information and help. The Learning for Adult Social Care Practice Innovation and Skills (LAPIS) project hopes to unite healthcare professionals.

## Teaching

### Transnational Education quality

As a global university with teaching partnerships around the world, Lancaster is committed to providing high-quality transnational education. This is demonstrated through our participation in the Quality Assurance Agency for Higher Education (QAA) QE-TNE Scheme. The Scheme is a method for the quality evaluation and enhancement of UK transnational education. It is enhancement-led, informed by robust metrics, and has the student experience at its heart.

## Public Engagement

### Morecambe Bay Curriculum

Developed by the community for the community, the Morecambe Bay Curriculum is a unique 'place-based' green curriculum for children and young people in our region to learn how to look after themselves, their area and their planet. One of the projects is called Little Researchers, which is where Lancaster University students work with local primary schools to help them research their local area and teach them about sustainability.

## University Operations

### The Lancaster Award

The Lancaster Award rewards students for taking part in those extra-curricular activities outside of academic studies that supplement the excellent education they receive at Lancaster University. Developed in partnership with employers, the certificate rewards students for making the most of their time at Lancaster, and enhances future job prospects by encouraging people to acquire new skills valued by employers.

### Library and Information Literacy Programme

The Library and Information Literacy Programme is designed to help students, researchers and staff to learn information literacy skills, develop a critical approach to dealing with information and to make the most of the physical and digital library. Information Literacy incorporates a range of knowledge, skills and abilities across a wide spectrum of activity including how to identify, search for, collect, organise, evaluate, analyse, present and communicate information.



# SDG5 – Gender Equality

Achieve gender equality and empower women and girls

5 GENDER  
EQUALITY



## Research

### The Centre for Gender Studies

The Centre for Gender Studies at Lancaster University is unique. It is one of the largest centres in the UK for feminist research, gender studies, and it is the only centre of its kind in the North West of England. Over 30 years old, CGS has a long and proud history, counting many world-leading feminist academics amongst its former directors and/or alumni.

### The Academy for Gender, Work and Leadership

The Academy for Gender, Work and Leadership is a dynamic research hub within Lancaster University Management School, focused on exploring relationships between gender, work and leadership and their impact on individuals, organisations and society. One of their recent projects looks at gender equality within business and management schools and how this is culturally constructed.

### Reproductive justice

Researchers from Lancaster have found that food insecurity is closely tied to financial strain, and can place people in a difficult decision of having to decide whether to spend their income on food or on accessing reproductive healthcare. It can increase the risk of intimate partner violence, and make it more difficult to leave a violent situations. The research hopes to highlight interconnections and lead to social change.



## Teaching

### Gender equality

Gender equality is embedded across the curriculum at Lancaster University.

For example, our Film and Creative Writing degree has a module on Women Film Makers, that explores the work of some of the most historically important female film-makers from the 1890s through to the present, considering films from around the globe. Our Sociology degree has a module on Gender Studies, which explores the gendering of identities, relations and institutions and the links between gender and power.

## University Operations

### Athena Swan

The Athena Swan Charter is a higher education programme for the advancement of gender equality. We have been members of the Athena Swan Charter since 2008, achieving awards at university, faculty and departmental level. Lancaster University has held an institutional level Bronze award since 2008, with renewals in 2012, 2014 and 2019. The Physics department and Faculty of Health and Medicine, currently hold Silver awards.

### Lancaster University Women's Network

The Lancaster University Women's Network was established in 2018 to support Women at Lancaster University by providing a forum for empowerment, discussion and individual development as well as a platform for debate, awareness raising and to facilitate action for change. They offer targeted development activities and events for women including training, mentoring and support.

# SDG6 – Clean Water and Sanitation

Sustainable management of water and sanitation for all



## Research

### RECIRCULATE

Researchers from Lancaster Environment Centre are working with researchers across Africa to deliver innovative solutions to pressing problems with water use and safety. RECIRCULATE will “join up” the different ways in which water sustains communities, from sewage disposal to energy generation and water used in food production.

### Flood risk

Researchers from the Sustainable Catchments group at Lancaster Environment Centre are involved in a project to look at flood risk and flood management across Cumbria, to see how they can naturally reduce the risk of flooding, improve water quality and reduce the risk of water shortages.

### Agricultural water saving

In March 2023, Professor Ian Dodd from Lancaster Environment Centre led 50 international scientists on a workshop in Israel to explore how best to utilise scarce water resources. Its aim was to bring academic, technical, and commercial communities together to exchange knowledge to enhance agricultural practice and save limited water resources.

## Teaching

### Water technologies

Our degree options run through The Lancaster Environment Centre, focus on teaching about global challenges such as climate change, sustainable development, resource provision, and natural hazards. For example, our Environmental Science degree has a module on Water Resources Management, that focuses on the technologies available to treat wastewater, the approaches used to assess chemical and biological water quality, and the links between agricultural and urban development and water quality.

## Public Engagement

### Sewage Waste

Our researchers work with United Utilities Water (UU), part of United Utilities Group PLC, through a Knowledge Transfer Partnership to investigate BIOSORBENT, a novel microbial method for the removal of waste from sewage, which uses less energy than existing activated sludge treatments.

## Campus Operations

### Water for all

We're committed to making free drinking water accessible for students and staff and we have a number of water fountains across campus plus free tap water available in all our food outlets. By adding more fountains, we are also hoping to reduce single-use plastic on campus.





# SDG7 – Affordable and Clean Energy

Ensure access to affordable, reliable and sustainable energy

7 AFFORDABLE AND CLEAN ENERGY



## Research

### Next generation batteries

Researchers and academics from our Departments of Chemistry and Physics and the Energy Lancaster research group are part of teams of researchers across the UK that will develop novel sodium-ion batteries as well as discover the next generation of cathode materials for lithium-ion batteries used for transport and energy grid storage.

### Tidal power

Researchers in Engineering are working with the UK Centre for Ecology and Hydrology to look at tidal power to meet the long-term energy needs of the UK. Tidal energy can be generated day and night, which could help make it cost-effective.

## Teaching

### Green energy

Our Environmental Science degree has a module on Energy and the Environment, that focuses on each of the key energy technologies, learning how to detail its importance, its forms and uses, how much is produced, and its cost and environmental impact, whilst looking at future solutions to sustainable energy demands.

## Public Engagement

### Inspiring the next generation

The wind turbine is a popular place for school visits to help inspire the next generation. Recently, a group of local primary school children from Dent in Cumbria, visited the wind turbine to help teach them about renewable energy and how it helps the planet. The University also runs frequent visits for staff and students throughout the year.

## Campus Operations

### Wind turbine

The wind turbine on our campus has generated between 4,000,000 and 5,000,000 kWh of electricity (around 14% of the University's electricity consumption each year). This produces enough electricity to power over 1200 homes for a year.

### Solar Farm

Planning permission has been granted for a Solar Farm on University land, comprising of 36,000 individual panels that will generate enough electricity to power the equivalent of more than 3000 homes and will reduce annual carbon emissions by more than 2600 tonnes of CO<sub>2</sub>.



Did you know?

- The solar farm will reduce energy emissions by up to **40%**
- The wind turbine saves on average **1200 tonnes** of CO<sub>2</sub> each year
- Since 2005, we've reduced energy related emissions by **50%**

# SDG8 – Decent Work and Economic Growth

Promote sustainable and inclusive economic growth and productive and decent employment for all

8 DECENT WORK AND ECONOMIC GROWTH



## Research

### The Pentland Centre for Sustainability in Business

The Pentland Centre for Sustainability in Business (part of Lancaster University Management School) is a research centre, delivering stimulating research on sustainability in business. Their work aims to demonstrate how a strategic focus on sustainability risks, challenges and opportunities can drive both financial and non-financial performance.

### The Work Foundation

The Work Foundation (part of Lancaster University Management School) is a leading think tank looking at improving work in the UK. Researchers have launched the UK Insecure Work Index that highlights that 20-25% of workers are in insecure work which could be from employment contracts, low wages or lack of workers rights. Insights are to raise awareness of an increase in insecure work, and the impact on specific groups of people including disabled people, ethnic minority groups and young people.

### Modern Slavery

Pioneering research from Lancaster University Management School is documenting the lived experiences of men, women and children trapped in modern slavery in order to report on the impact and aim to make factories across the world safer and better places to work.

## Teaching

### Sustainable business

Many of our degree options at Lancaster University Management School teach sustainable and ethical business practices, in order to inspire future leaders of industry. For example, our Management and Human Resources degree has a module on business ethics and another module on global corporate social responsibility.

## Public Engagement

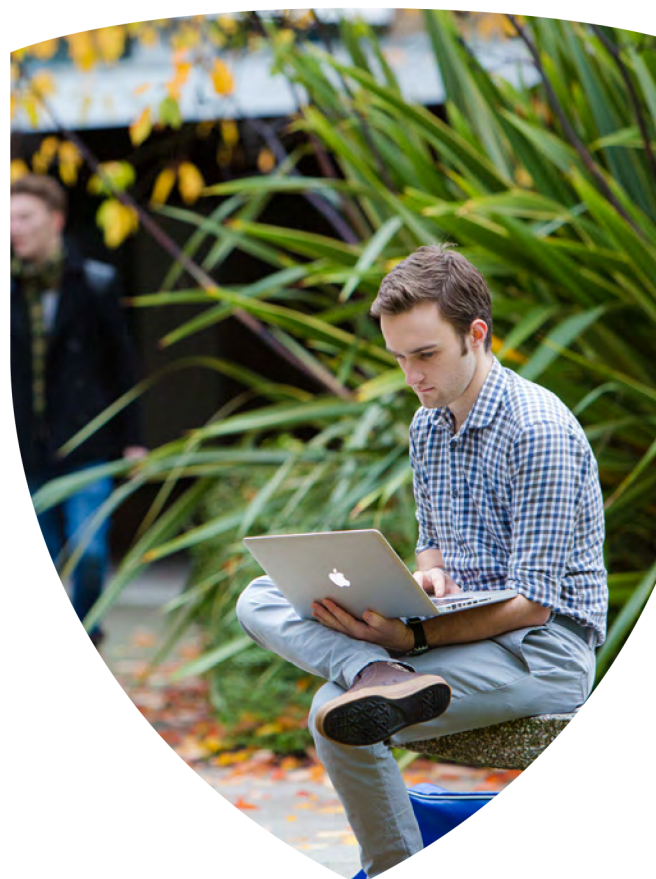
### Eco innovation

The Centre for Global Eco-Innovation in Lancaster Environment Centre brings together researchers with real-world businesses to support innovation and growth in a sustainable manner. One example business is Relic Plastic CIC, based in Heysham, who collect post-consumer plastics such as DVD cases, bottle tops, sweet tubs, and industrial plastic waste and manufacture high-quality, handmade products such as shower combs, knife handles and furniture. Through working with Lancaster, they have managed to increase its partnership with the community including 50 businesses, schools and community groups to reduce plastic waste in landfills and increase awareness and sustainable action.

## University Operations

### The Careers and Employability Service

Lancaster's Careers and Employability Service is available for specialist career advice, exploring study options, career events and work experience opportunities. Our CV360 portal allows students to upload their CV to receive personalized insights into how to improve it – from spelling and grammatical changes, to tips on including skills.



# SDG9 – Industry, Innovation and Infrastructure

Build resilient infrastructure and sustainable industrialisation

9 INDUSTRY, INNOVATION  
AND INFRASTRUCTURE



## Research

### Soil in construction

Academics at Lancaster University have been working on a plan to put a healthy respect for soil at the centre of planning and construction. Soils are non-renewable and offer a host of important eco system services, such as locking up carbon and helping to prevent flooding. The task force is launching a new report which highlights existing problems and lays out a roadmap to minimise soil damage and ensure future building work supports the needs of people and the natural environment.

### Resilient Cities

Our Future Cities Research Institute is a joint partnership between Lancaster University and Sunway University in Malaysia. One area of research they focus on is resilient cities and how to make cities as well as communities and citizens more resilient, agile and adaptable to climate change and other global challenges, such as future pandemics.

## Teaching

### Sustainable computing

The new Cyber Security degree is designed for the cyber security systems engineers and architects of the future. The course has a module called Sustainable Computing, focusing on key concepts associated with creating sustainable computing and how computers shape a greener economy and society.

### Radical creativity

Our Architecture degrees have radical creativity embedded into them to think of highly creative, innovative solutions to future cities and rapid urbanisation. The teaching focuses on human-centred design in a rapidly changing climate.

## Public Engagement

### Smart materials

A new £4.4 million programme - Greater Innovation for Smarter Material Optimisation (GISMO) will engage with 250 SMEs in the Cheshire and Warrington areas. Successful businesses will gain access to research and development expertise and specialist technology to solve industry-driven challenges through innovations in 'smart' materials.

## Campus Operations

### Construction

From 2023 onwards, the University has committed to significantly less construction of new buildings, and more focus on repurposing existing buildings and upgrading them to be more energy efficient and better suited for purpose. If we build new projects, they will be required to be via low-carbon construction techniques.

We estimate the carbon over the next 5 years from refurbishment from recycling and repurposing existing space is c80% less than the last 5 years.



# SDG10 – Reduced Inequalities

Reduced inequalities within and among nations



## Research

### Insecure work for disabled workers

New research from The Work Foundation, a leading think tank at Lancaster University, dedicated to improving work in the UK, has found there are more than 1.3million disabled people trapped in insecure work in the UK which means they are less likely to have key rights and protections such as redundancy pay. The report calls for the Government and employers to tackle the disability insecurity gap.

### Refugee entrepreneurship

Academics from Lancaster University Management School have been working with other universities to bring to life the experiences of refugees and their ventures into entrepreneurship. The project is part of the UN-affirmed Global Compact on Refugees to help refugees support themselves and their communities.

## Teaching

### Social Work

Reducing inequalities is a theme that is embedded into many Lancaster degrees. For example, our Social Work degree has a module on Contemporary Social Problems that looks at how contemporary social problems reflect and reproduce economic and social inequalities and how those inequalities are constructed through different welfare ideologies and approaches.



## University Operations

### Equality, Diversity and Inclusion (EDI)

We are committed to creating an environment where everyone can thrive and fulfil their potential is expressed by initiatives linked with recognising and supporting protected characteristics including age, disability, gender identity, race, religion and sex and sexual orientation in alignment with the Equality Act 2010. We have several EDI-related networks and associations at Lancaster University for staff and students to connect, share best practice and network.

### Lancaster Success Programme

We offer a programme of activities to enable students from widening participation backgrounds to thrive during their studies and successfully progress into graduate employment or postgraduate study. The Lancaster Success Programme (LSP) is designed to support students from backgrounds that are traditionally under-represented at university, who may not always be aware of the breadth of support and opportunities available to them.

### Safe Home Base

Lancaster University is committed to create an environment and culture where all students, staff and visitors feel safe, welcome and supported for who they are. We hope to create Ally Networks that can support diversity and inclusion at Lancaster. Thanks to the initiative of our LGBT Staff Network, we started by launching 'Safe Home Base', the LGBTQIA+ Ally Network.

# SDG11 – Sustainable Cities and Communities

Make cities inclusive, resilient and sustainable

11 SUSTAINABLE CITIES AND COMMUNITIES



## Research

### Air pollution near schools

Researchers from Lancaster University have published new evidence showing that selective planting of vegetation between roads and playgrounds can substantially cut toxic traffic-derived air pollution reaching school children and that roadside vegetation can be designed, installed and maintained to achieve rapid, significant and cost-effective improvement of air quality.

### Helping nature and people thrive in cities

A Lancaster University-led project, QUENCH, is bringing academics and practitioners together to find answers to how the quality of green spaces in cities affects the benefits we get from them and how the health of nature affects our own feelings of connection with nature, and our health. The project will help create urban environments that are good for people and ecosystems.

## Teaching

### Sustainable cities

Many of our degrees focus on cities and spaces of the future in the face of environmental challenges. For example, our Human Geography degree, has a module called Society and Space that focuses on the interactions between society and space, and between people and places at a variety of spatial scales and in different parts of the globe.

### Radical creativity

Our Architecture degrees have a large focus on addressing the climate crisis through Radical Creativity - highly creative, innovative and socially embedded, solutions.

## Public Engagement

### Community Benefit Fund

Each year, our Wind Turbine Community Benefit Fund allocates up to £20,000 to Lancaster District-based not-for-profit organisations, charities, trusts, community groups or voluntary organisations to support sustainable projects, large and small. The funding really makes a difference to the local area, whether that's through funding new charging points for electric vehicles or contributing towards refurbishment projects to improve energy efficiency.

## Campus Operations

### Sustainable Travel

We have made significant investment in sustainable travel on campus and for staff, students and visitors commuting to campus. There are over 1500 dedicated bicycle parking spaces, across more than 80 locations on campus and dedicated cycle lanes between the University and the city centre for easy access. Dr Bike holds weekly sessions on campus for bike maintenance and expert advice. Around 500 staff and more than 1000 students enjoy cycling to campus.



# SDG12 – Responsible Consumption and Production

Ensure responsible production and sustainable consumption



## Research

### Reducing plastic packaging

The Plastic Packaging in Peoples' Lives (PPIPL) project focuses on how plastic food packaging is embedded in consumers' day-to-day lives. Working with stakeholders along the supply chain, they will provide valuable insights to increase collaboration and share understanding along the UK food plastic packaging supply chain in order to create a sense of shared responsibility and improved packaging options.

## Teaching

### Consumer Culture

Responsible consumption and sustainable behavior is embedded into teaching modules across the university. For example, our Sociology degree has a module on Consumer Culture that looks at advertising and how this impacts consumption behavior and shopping culture.

### Business Ethics

Our Executive MBA (EMBA) programme has a module on Business Ethics and Sustainability that encourages students to put theory into real-life businesses. Recently one participant on the course has taken the knowledge learned and helped his employer save 6.3 tonnes of plastic each year.

## Student Engagement

### Don't Ditch It

Every year the Don't Ditch It project collects more than 20 tonnes of unwanted items from students across campus and diverts them from landfill to be repurposed and resold in our ECOShop. Hosted by Green Lancaster and run by students, the shop sells a wide range of repurposed donations from the Don't Ditch It project, including books, electrical items and bedding that were donated to be reused by others.

## Campus Operations

### Electric Waste

The University has worked closely with the City Council to manage waste on campus with electric trucks – heavily reducing carbon emissions. The trucks can collect up to 10 tonnes of waste at a time, and from just a single charge of electricity are capable of a full 10-hour shift, lifting around 1500 bins.



Did you know?

- Over **70%** of waste is recycled
- **31 tonnes** of waste was diverted from landfill for reuse in 2022

# SDG13 – Climate Action

Take urgent action to combat the climate emergency



## Research

### Tracking melting ice

An international research team including academics from Lancaster have been studying the impact of climate change on the lakes around the East Antarctic Ice Sheet. The study provides vital insight into why and where lakes grow, and will help experts understand which ice shelves may be most at risk of breaking up as a consequence of surface melting.

## Teaching

### Climate emergency teaching

Our degree options run through The Lancaster Environment Centre, focus on teaching about global challenges such as climate change, sustainable development, resource provision, and natural hazards. For example, our Ecology and Conservation degree runs field trips to places such as the Doñana National Park in Spain to spot and learn about endangered wildlife and plants.

## University Operations

### Net-zero commitment

At Lancaster, we recognise that sustainability, the climate emergency and our environment is the responsibility of our whole community. Our commitments are already leading the way; Lancaster University is one of the highest producers of renewable energy out of all UK Universities, and since 2005 we've reduced our electricity and heating emissions by 50%. We know there's more we need to do, that's why we're committed to becoming carbon neutral by 2035.

### Travel decision tree

Lancaster Environment Centre (LEC) have developed a travel decision tree to assist with decision-making about travel modes and alternatives to business and academic travel across the University. We implemented this with our business travel team in order to promote sustainable travel options.

## Student Engagement

### Green Lancaster

Green Lancaster is a partnership between Lancaster University and the Students' Union devoted to engaging students, staff, and the local community in practical responses to the climate and ecological emergencies. Their community is full of determined, forward thinking people who all share a common desire; to make a difference. From planting trees on campus, to campaigning for action on climate change.

### Climate Action Society

Lancaster University Climate Action Society (LUCAS) offers a community to like-minded students who wish to engage in learning more about the climate crisis whilst offering a fun and friendly community where they can meet new people. They run educational events such as climate talks by professionals, friendly debates and discussions, as well as promotion of things we can all do to reduce our environmental impact.



# SDG14 – Life below water

Conserve and sustainably use the oceans, seas and marine resources



## Research

### Marine biodiversity

An international team of experts, including academics from Lancaster, have researched and identified a list of 15 issues they believe are likely to have a significant impact on marine and coastal biodiversity over the next five to ten years. The aim is to raise awareness and encourage investment into full assessment of these issues now, and potentially drive policy change, before the issues have a major impact on biodiversity.

### Fishing and malnutrition

An international team of researchers including academics from Lancaster, have identified evidence that shows that foreign fishing (fleets fishing in foreign waters) and international seafood trade exacerbate nutrition insecurity, taking fish away from the waters of nations experiencing high prevalence of malnutrition and diverting the catches predominantly to wealthier countries, with the greatest impacts on tropical countries and small island states such as Papua New Guinea and Guyana.

### Coral reefs

Lancaster Environment Centre's REEFS group is working to protect and understand some of the world's most vulnerable marine ecosystems and the people who depend upon them. Hundreds of millions of people depend on coral reefs worldwide for their food, livelihoods and culture, and, in turn, societies shape reef environments.

## Teaching

### Aquatic life

Our degree options run through The Lancaster Environment Centre, focus on teaching about global challenges such as climate change, sustainable development, resource provision, and natural hazards. For example, our Earth and Environmental Science degree has a module on Aquatic Biogeochemistry, where students learn about the chemical composition of aquatic systems in nature – and how to look after them.

## Student and Staff Engagement

### The Bay

Green Lancaster's ECOWild project has connected with Cumbria Wildlife Trust's team of the project 'The Bay: A Blueprint for Recovery', a Nature and Wellbeing Programme to offer trips for students and staff to Walney Island, where they carried out a shoresearch survey to look at a wide array of fascinating creatures and plants among the rock pools and interact with nature while also contributing to vital initiatives around the nation addressing the Climate and Ecological Emergency.

## Campus Operations

### Food on campus

In all our food outlets on campus, no fish is served from the Marine Conservation Society 'fish to avoid list'. Local and sustainable suppliers are used for all our fish, wherever possible.





# SDG15 – Life on land

Protect, restore and promote the sustainable use of land ecosystems. Reverse biodiversity loss and land degradation



## Research

### Amazon rainforest sounds

Scientists from Lancaster University are to deploy a network of microphones in the Amazon rainforest to listen and measure the numbers and species of birds, insects and other wildlife. This project is part of the first large-scale understanding of how humans are affecting the animals that call tropical forests home.

### Biodiversity in solar farms

Lancaster University researchers have helped to develop a new standard approach to assess how solar farms affect biodiversity. New guidance from the research will help guide solar farms in how to better understand the ecological potential of solar farms; including protecting mammals, encouraging habitats for breeding birds and planting wildflowers.

### Agriculture in South America

An international team of researchers from universities of San Luis in Argentina and Lancaster University, used satellite imagery and field observations over the last four decades, to track how large-scale agriculture affects flooding in the Argentinean Pampas.



## Student and Staff Engagement

### ECOWoods

ECOWoods is a project run by Green Lancaster to restore and maintain the natural landscape across campus and the nearby University-owned Forrest Hills. Volunteer staff and students have planted more than 4000 trees over the last 3 years to build natural habitats and promote biodiversity.

## Campus Operations

### Green Flag Award

Our outdoor spaces on campus have received the Green Flag Award for the twelfth year in a row – the international benchmark for the quality of green spaces.

### Hedgehog Friendly Campus

Our campus is 'Gold Accredited' by the national Biodiversity Programme; Hedgehog Friendly Campus. The campaign is coordinated by the British Hedgehog Preservation Society (BHPS) and assesses institutions across the Higher Education sector, recognising sustainable processes and practices that protect hedgehogs and allow them to thrive.

Did you know?

- Over **35000** trees on campus.
- **2.6 mile** woodland trail around the edge of campus
- **'No Mow Zones'** to encourage wildflowers on campus

# SDG16 – Peace, Justice and Strong Institutions

Promote peaceful and inclusive societies and provide access to justice for all

**16** PEACE, JUSTICE AND STRONG INSTITUTIONS



## Research

### Sustainable citizenship

Researchers from Imagination Lancaster have been involved in a research project to look at public policies and how these impacts young people in London – and how this could mapped against sustainability into sustainable citizenship. Youth, democracy, and sustainable citizenship: reimagining the city and empowering young people through engagement with policy-makers is a one-year research project funded by the British Academy, and the Department for Business, Energy and Industrial Strategy, and framed around the theme of 'What is a good city?'

### Family Justice Data Partnership

Researchers from Lancaster's Child and Family Justice Research Centre have been looking into the family justice system and the impact on families using these services. The Family Justice Data Partnership aims to improve understanding using data, of the family justice system and use this data to assist with future policy development.

### Geopolitical tensions and climate change

Basil Germond, Professor of International Security at Lancaster University, gave oral evidence to the House of Commons in May 2023, on how increasing geopolitical tensions in the Arctic, resulting from Russia's war of aggression in Ukraine, have weakened Arctic governance and compromised climate science and polar research.

## Teaching

### Peace studies

We're committed to teaching about fairer societies and ways to improve life for others. For example, our Peace Studies and International Relations degree, examines peace and conflict resolution, human rights and how sustainability and global changes will impact societies.

## University Operations

### Sustainable investment

Following our declaration of the climate emergency, the University has taken further steps in its commitment to sustainability by transferring all its managed investment portfolios to two new funds designed to have a positive impact on people and the planet.

### Governance

We've a duty to conduct our affairs in a responsible and transparent way. The Council is our governing body, carrying ultimate responsibility for our overall strategic direction and for the management of the university. As an institution, we are also committed to including student representation at Council meetings.



# SDG17 – Partnerships for the Goals

Global partnerships for sustainable development

17 PARTNERSHIPS FOR THE GOALS



## Research

### Government Partnerships

Roger Kemp, Emeritus Professor in the School of Engineering, is a member of the National Engineering Policy Centre working group on decarbonisation policy. The NEPC is a partnership of 42 professional engineering organisations, led by the Royal Academy of Engineering, which informs government policy. Professor Kemp is a member of a small group briefing government ministers on aspects of energy policy, with the latest NEPC report examining the role of hydrogen in the push for Net Zero.

## Global

### University of Lausanne Partnership

Our partnership with Lausanne creates opportunities for staff exchange between our two institutions. This platform provides excellent experiences for staff to share best practice and develop as global citizens.

## Teaching

### Overseas teaching partnerships

Lancaster is constantly developing partnerships across the world to ensure it delivers teaching that takes students to the frontiers of knowledge and produces graduates who can compete in a global job market. In addition to numerous international research partnerships, Lancaster has four strategic overseas teaching partnerships offering validated Lancaster degrees in China, Germany, Ghana and Malaysia.



- **Lancaster University, Leipzig, Germany – Offers four Lancaster-accredited degrees taught by the university.**
- **Lancaster University, Ghana – The first British university branch campus in Ghana allows students to access Lancaster’s teaching and research excellence.**
- **Lancaster University College, Beijing Jiatong University, China – A joint institute. Students receive dual-degrees from both institutions with separate academic transcripts.**
- **Sunway University, Malaysia – Academic partnership where students can study on a range of undergraduate degree schemes and graduate from both universities.**

## Global experiences

Coming to Lancaster is all about broadening your horizons, learning new subjects, finding new perspectives and discovering new experiences as part of a community that reaches around the world. We have students from over 100 countries, so students have every chance to make international connections, on their course, in societies or socially.

Students might spend a few weeks abroad as part of their course, or even study for a whole year with one of our partner institutions around the world.



Lancaster University, Lancaster, LA1 4YW

+44 (0)1524 65201

[lancaster.ac.uk/sustainability](https://lancaster.ac.uk/sustainability)

**Natalie Bauer**

**August 2023**